



Online Manual

Print Plug-In for Office Guide

Contents

- Symbols Used in This Document. 3
- Touch-enabled Device Users (Windows). 4
- Trademarks and Licenses. 5
- Print Plug-In for Office Guide. 19
 - General Notes (Print Plug-In for Office). 20
 - The Features of Print Plug-In for Office. 21
 - When Print Plug-In for Office is Not Displayed. 22
 - To Start from Microsoft Word. 26
 - Print Matching Roll Width (Word). 29
 - Borderless Printing (Word). 32
 - Multi-Page Printing (Word). 36
 - Register the Settings (Word). 39
 - Print Using Registered Settings (Word). 41
 - Portrait Orientation/Landscape Orientation (Word). 44
 - To Start from Microsoft PowerPoint. 47
 - Print Matching Roll Width (PowerPoint). 50
 - Borderless Printing (PowerPoint). 53
 - Multi-Page Printing (PowerPoint). 57
 - Register the Settings (PowerPoint). 60
 - Print Using Registered Settings (PowerPoint). 62
 - Portrait Orientation/Landscape Orientation (PowerPoint). 65
 - To Start from Microsoft Excel. 68
 - Print Entire Sheet (Excel). 70
 - Print Selected Area (Excel). 74
 - Configuring Binding (Excel). 78
 - Configuring Special Settings. 80

Symbols Used in This Document

Warning

Instructions that, if ignored, could result in death or serious personal injury caused by incorrect operation of the equipment. These must be observed for safe operation.

Caution

Instructions that, if ignored, could result in personal injury or material damage caused by incorrect operation of the equipment. These must be observed for safe operation.

Important

Instructions including important information. To avoid damage and injury or improper use of the product, be sure to read these indications.

Note

Instructions including notes for operation and additional explanations.

Basics

Instructions explaining basic operations of your product.

Note

- Icons may vary depending on your product.

Touch-enabled Device Users (Windows)

For touch actions, you need to replace "right-click" in this document with the action set on the operating system. For example, if the action is set to "press and hold" on your operating system, replace "right-click" with "press and hold."

Trademarks and Licenses

- Microsoft is a registered trademark of Microsoft Corporation.
- Windows is a trademark or registered trademark of Microsoft Corporation in the U.S. and/or other countries.
- Windows Vista is a trademark or registered trademark of Microsoft Corporation in the U.S. and/or other countries.
- Internet Explorer is a trademark or registered trademark of Microsoft Corporation in the U.S. and/or other countries.
- Mac, Mac OS, macOS, OS X, AirPort, App Store, AirPrint, the AirPrint logo, Safari, Bonjour, iPad, iPhone and iPod touch are trademarks of Apple Inc., registered in the U.S. and other countries.
- IOS is a trademark or registered trademark of Cisco in the U.S. and other countries and is used under license.
- Google Cloud Print, Google Chrome, Chrome OS, Chromebook, Android, Google Play, Google Drive, Google Apps and Google Analytics are either registered trademarks or trademarks of Google Inc.
- Adobe, Acrobat, Flash, Photoshop, Photoshop Elements, Lightroom, Adobe RGB and Adobe RGB (1998) are either registered trademarks or trademarks of Adobe Systems Incorporated in the United States and/or other countries.
- Bluetooth is a trademark of Bluetooth SIG, Inc., U.S.A. and licensed to Canon Inc.
- Autodesk and AutoCAD are registered trademarks or trademarks of Autodesk, Inc., and/or its subsidiaries and/or affiliates in the USA and/or other countries.

►► Note

- The formal name of Windows Vista is Microsoft Windows Vista operating system.

Copyright (c) 2003-2015 Apple Inc. All rights reserved.

Redistribution and use in source and binary forms, with or without modification, are permitted provided that the following conditions are met:

1. Redistributions of source code must retain the above copyright notice, this list of conditions and the following disclaimer.
2. Redistributions in binary form must reproduce the above copyright notice, this list of conditions and the following disclaimer in the documentation and/or other materials provided with the distribution.
3. Neither the name of Apple Inc. ("Apple") nor the names of its contributors may be used to endorse or promote products derived from this software without specific prior written permission.

THIS SOFTWARE IS PROVIDED BY APPLE AND ITS CONTRIBUTORS "AS IS" AND ANY EXPRESS OR IMPLIED WARRANTIES, INCLUDING, BUT NOT LIMITED TO, THE IMPLIED WARRANTIES OF MERCHANTABILITY AND FITNESS FOR A PARTICULAR PURPOSE ARE DISCLAIMED. IN NO EVENT SHALL APPLE OR ITS CONTRIBUTORS BE LIABLE FOR ANY DIRECT, INDIRECT, INCIDENTAL, SPECIAL, EXEMPLARY, OR CONSEQUENTIAL DAMAGES (INCLUDING, BUT NOT LIMITED TO, PROCUREMENT OF SUBSTITUTE GOODS OR SERVICES; LOSS OF USE, DATA, OR PROFITS; OR BUSINESS INTERRUPTION) HOWEVER CAUSED AND ON ANY THEORY OF LIABILITY, WHETHER IN CONTRACT, STRICT LIABILITY, OR TORT (INCLUDING NEGLIGENCE OR OTHERWISE) ARISING IN ANY WAY OUT OF THE USE OF THIS SOFTWARE, EVEN IF ADVISED OF THE POSSIBILITY OF SUCH DAMAGE.

Apache License

TERMS AND CONDITIONS FOR USE, REPRODUCTION, AND DISTRIBUTION

1. Definitions.

"License" shall mean the terms and conditions for use, reproduction, and distribution as defined by Sections 1 through 9 of this document.

"Licensor" shall mean the copyright owner or entity authorized by the copyright owner that is granting the License.

"Legal Entity" shall mean the union of the acting entity and all other entities that control, are controlled by, or are under common control with that entity. For the purposes of this definition, "control" means (i) the power, direct or indirect, to cause the direction or management of such entity, whether by contract or otherwise, or (ii) ownership of fifty percent (50%) or more of the outstanding shares, or (iii) beneficial ownership of such entity.

"You" (or "Your") shall mean an individual or Legal Entity exercising permissions granted by this License.

"Source" form shall mean the preferred form for making modifications, including but not limited to software source code, documentation source, and configuration files.

"Object" form shall mean any form resulting from mechanical transformation or translation of a Source form, including but not limited to compiled object code, generated documentation, and conversions to other media types.

"Work" shall mean the work of authorship, whether in Source or Object form, made available under the License, as indicated by a copyright notice that is included in or attached to the work (an example is provided in the Appendix below).

"Derivative Works" shall mean any work, whether in Source or Object form, that is based on (or derived from) the Work and for which the editorial revisions, annotations, elaborations, or other modifications represent, as a whole, an original work of authorship. For the purposes of this License, Derivative Works shall not include works that remain separable from, or merely link (or bind by name) to the interfaces of, the Work and Derivative Works thereof.

"Contribution" shall mean any work of authorship, including the original version of the Work and any modifications or additions to that Work or Derivative Works thereof, that is intentionally submitted to Licensor for inclusion in the Work by the copyright owner or by an individual or Legal Entity authorized to submit on behalf of the copyright owner. For the purposes of this definition, "submitted" means any form of electronic, verbal, or written communication sent to the Licensor or its representatives, including but not limited to communication on electronic mailing lists, source code control systems, and issue tracking systems that are managed by, or on behalf of, the Licensor for the purpose of discussing and improving the Work, but excluding communication that is conspicuously marked or otherwise designated in writing by the copyright owner as "Not a Contribution."

"Contributor" shall mean Licensor and any individual or Legal Entity on behalf of whom a Contribution has been received by Licensor and subsequently incorporated within the Work.

2. Grant of Copyright License. Subject to the terms and conditions of this License, each Contributor hereby grants to You a perpetual, worldwide, non-exclusive, no-charge, royalty-free, irrevocable

copyright license to reproduce, prepare Derivative Works of, publicly display, publicly perform, sublicense, and distribute the Work and such Derivative Works in Source or Object form.

3. Grant of Patent License. Subject to the terms and conditions of this License, each Contributor hereby grants to You a perpetual, worldwide, non-exclusive, no-charge, royalty-free, irrevocable (except as stated in this section) patent license to make, have made, use, offer to sell, sell, import, and otherwise transfer the Work, where such license applies only to those patent claims licensable by such Contributor that are necessarily infringed by their Contribution(s) alone or by combination of their Contribution(s) with the Work to which such Contribution(s) was submitted. If You institute patent litigation against any entity (including a cross-claim or counterclaim in a lawsuit) alleging that the Work or a Contribution incorporated within the Work constitutes direct or contributory patent infringement, then any patent licenses granted to You under this License for that Work shall terminate as of the date such litigation is filed.
4. Redistribution. You may reproduce and distribute copies of the Work or Derivative Works thereof in any medium, with or without modifications, and in Source or Object form, provided that You meet the following conditions:
 1. You must give any other recipients of the Work or Derivative Works a copy of this License; and
 2. You must cause any modified files to carry prominent notices stating that You changed the files; and
 3. You must retain, in the Source form of any Derivative Works that You distribute, all copyright, patent, trademark, and attribution notices from the Source form of the Work, excluding those notices that do not pertain to any part of the Derivative Works; and
 4. If the Work includes a "NOTICE" text file as part of its distribution, then any Derivative Works that You distribute must include a readable copy of the attribution notices contained within such NOTICE file, excluding those notices that do not pertain to any part of the Derivative Works, in at least one of the following places: within a NOTICE text file distributed as part of the Derivative Works; within the Source form or documentation, if provided along with the Derivative Works; or, within a display generated by the Derivative Works, if and wherever such third-party notices normally appear. The contents of the NOTICE file are for informational purposes only and do not modify the License. You may add Your own attribution notices within Derivative Works that You distribute, alongside or as an addendum to the NOTICE text from the Work, provided that such additional attribution notices cannot be construed as modifying the License.

You may add Your own copyright statement to Your modifications and may provide additional or different license terms and conditions for use, reproduction, or distribution of Your modifications, or for any such Derivative Works as a whole, provided Your use, reproduction, and distribution of the Work otherwise complies with the conditions stated in this License.

5. Submission of Contributions. Unless You explicitly state otherwise, any Contribution intentionally submitted for inclusion in the Work by You to the Licensor shall be under the terms and conditions of this License, without any additional terms or conditions. Notwithstanding the above, nothing herein shall supersede or modify the terms of any separate license agreement you may have executed with Licensor regarding such Contributions.
6. Trademarks. This License does not grant permission to use the trade names, trademarks, service marks, or product names of the Licensor, except as required for reasonable and customary use in describing the origin of the Work and reproducing the content of the NOTICE file.
7. Disclaimer of Warranty. Unless required by applicable law or agreed to in writing, Licensor provides the Work (and each Contributor provides its Contributions) on an "AS IS" BASIS, WITHOUT WARRANTIES OR CONDITIONS OF ANY KIND, either express or implied, including, without

limitation, any warranties or conditions of TITLE, NON-INFRINGEMENT, MERCHANTABILITY, or FITNESS FOR A PARTICULAR PURPOSE. You are solely responsible for determining the appropriateness of using or redistributing the Work and assume any risks associated with Your exercise of permissions under this License.

8. Limitation of Liability. In no event and under no legal theory, whether in tort (including negligence), contract, or otherwise, unless required by applicable law (such as deliberate and grossly negligent acts) or agreed to in writing, shall any Contributor be liable to You for damages, including any direct, indirect, special, incidental, or consequential damages of any character arising as a result of this License or out of the use or inability to use the Work (including but not limited to damages for loss of goodwill, work stoppage, computer failure or malfunction, or any and all other commercial damages or losses), even if such Contributor has been advised of the possibility of such damages.
9. Accepting Warranty or Additional Liability. While redistributing the Work or Derivative Works thereof, You may choose to offer, and charge a fee for, acceptance of support, warranty, indemnity, or other liability obligations and/or rights consistent with this License. However, in accepting such obligations, You may act only on Your own behalf and on Your sole responsibility, not on behalf of any other Contributor, and only if You agree to indemnify, defend, and hold each Contributor harmless for any liability incurred by, or claims asserted against, such Contributor by reason of your accepting any such warranty or additional liability.

END OF TERMS AND CONDITIONS

---- Part 1: CMU/UCD copyright notice: (BSD like) ----

Copyright 1989, 1991, 1992 by Carnegie Mellon University

Derivative Work - 1996, 1998-2000

Copyright 1996, 1998-2000 The Regents of the University of California

All Rights Reserved

Permission to use, copy, modify and distribute this software and its documentation for any purpose and without fee is hereby granted, provided that the above copyright notice appears in all copies and that both that copyright notice and this permission notice appear in supporting documentation, and that the name of CMU and The Regents of the University of California not be used in advertising or publicity pertaining to distribution of the software without specific written permission.

CMU AND THE REGENTS OF THE UNIVERSITY OF CALIFORNIA DISCLAIM ALL WARRANTIES WITH REGARD TO THIS SOFTWARE, INCLUDING ALL IMPLIED WARRANTIES OF MERCHANTABILITY AND FITNESS. IN NO EVENT SHALL CMU OR THE REGENTS OF THE UNIVERSITY OF CALIFORNIA BE LIABLE FOR ANY SPECIAL, INDIRECT OR CONSEQUENTIAL DAMAGES OR ANY DAMAGES WHATSOEVER RESULTING FROM THE LOSS OF USE, DATA OR PROFITS, WHETHER IN AN ACTION OF CONTRACT, NEGLIGENCE OR OTHER TORTIOUS ACTION, ARISING OUT OF OR IN CONNECTION WITH THE USE OR PERFORMANCE OF THIS SOFTWARE.

---- Part 2: Networks Associates Technology, Inc copyright notice (BSD) ----

Copyright (c) 2001-2003, Networks Associates Technology, Inc

All rights reserved.

Redistribution and use in source and binary forms, with or without modification, are permitted provided that the following conditions are met:

- * Redistributions of source code must retain the above copyright notice, this list of conditions and the following disclaimer.
- * Redistributions in binary form must reproduce the above copyright notice, this list of conditions and the following disclaimer in the documentation and/or other materials provided with the distribution.
- * Neither the name of the Networks Associates Technology, Inc nor the names of its contributors may be used to endorse or promote products derived from this software without specific prior written permission.

THIS SOFTWARE IS PROVIDED BY THE COPYRIGHT HOLDERS AND CONTRIBUTORS ``AS IS" AND ANY EXPRESS OR IMPLIED WARRANTIES, INCLUDING, BUT NOT LIMITED TO, THE IMPLIED WARRANTIES OF MERCHANTABILITY AND FITNESS FOR A PARTICULAR PURPOSE ARE DISCLAIMED. IN NO EVENT SHALL THE COPYRIGHT HOLDERS OR CONTRIBUTORS BE LIABLE FOR ANY DIRECT, INDIRECT, INCIDENTAL, SPECIAL, EXEMPLARY, OR CONSEQUENTIAL DAMAGES (INCLUDING, BUT NOT LIMITED TO, PROCUREMENT OF SUBSTITUTE GOODS OR SERVICES; LOSS OF USE, DATA, OR PROFITS; OR BUSINESS INTERRUPTION) HOWEVER CAUSED AND ON ANY THEORY OF LIABILITY, WHETHER IN CONTRACT, STRICT LIABILITY, OR TORT (INCLUDING NEGLIGENCE OR OTHERWISE) ARISING IN ANY WAY OUT OF THE USE OF THIS SOFTWARE, EVEN IF ADVISED OF THE POSSIBILITY OF SUCH DAMAGE.

---- Part 3: Cambridge Broadband Ltd. copyright notice (BSD) ----

Portions of this code are copyright (c) 2001-2003, Cambridge Broadband Ltd.

All rights reserved.

Redistribution and use in source and binary forms, with or without modification, are permitted provided that the following conditions are met:

- * Redistributions of source code must retain the above copyright notice, this list of conditions and the following disclaimer.
- * Redistributions in binary form must reproduce the above copyright notice, this list of conditions and the following disclaimer in the documentation and/or other materials provided with the distribution.
- * The name of Cambridge Broadband Ltd. may not be used to endorse or promote products derived from this software without specific prior written permission.

THIS SOFTWARE IS PROVIDED BY THE COPYRIGHT HOLDER ``AS IS" AND ANY EXPRESS OR IMPLIED WARRANTIES, INCLUDING, BUT NOT LIMITED TO, THE IMPLIED WARRANTIES OF MERCHANTABILITY AND FITNESS FOR A PARTICULAR PURPOSE ARE DISCLAIMED. IN NO EVENT SHALL THE COPYRIGHT HOLDER BE LIABLE FOR ANY DIRECT, INDIRECT, INCIDENTAL, SPECIAL, EXEMPLARY, OR CONSEQUENTIAL DAMAGES (INCLUDING, BUT NOT LIMITED TO, PROCUREMENT OF SUBSTITUTE GOODS OR SERVICES; LOSS OF USE, DATA, OR PROFITS; OR BUSINESS INTERRUPTION) HOWEVER CAUSED AND ON ANY THEORY OF LIABILITY, WHETHER IN CONTRACT, STRICT LIABILITY, OR TORT (INCLUDING NEGLIGENCE OR OTHERWISE) ARISING IN ANY WAY OUT OF THE USE OF THIS SOFTWARE, EVEN IF ADVISED OF THE POSSIBILITY OF SUCH DAMAGE.

---- Part 4: Sun Microsystems, Inc. copyright notice (BSD) ----

Copyright c 2003 Sun Microsystems, Inc., 4150 Network Circle, Santa Clara, California 95054, U.S.A. All rights reserved.

Use is subject to license terms below.

This distribution may include materials developed by third parties.

Sun, Sun Microsystems, the Sun logo and Solaris are trademarks or registered trademarks of Sun Microsystems, Inc. in the U.S. and other countries.

Redistribution and use in source and binary forms, with or without modification, are permitted provided that the following conditions are met:

- * Redistributions of source code must retain the above copyright notice, this list of conditions and the following disclaimer.
- * Redistributions in binary form must reproduce the above copyright notice, this list of conditions and the following disclaimer in the documentation and/or other materials provided with the distribution.
- * Neither the name of the Sun Microsystems, Inc. nor the names of its contributors may be used to endorse or promote products derived from this software without specific prior written permission.

THIS SOFTWARE IS PROVIDED BY THE COPYRIGHT HOLDERS AND CONTRIBUTORS ``AS IS" AND ANY EXPRESS OR IMPLIED WARRANTIES, INCLUDING, BUT NOT LIMITED TO, THE IMPLIED WARRANTIES OF MERCHANTABILITY AND FITNESS FOR A PARTICULAR PURPOSE ARE DISCLAIMED. IN NO EVENT SHALL THE COPYRIGHT HOLDERS OR CONTRIBUTORS BE LIABLE FOR ANY DIRECT, INDIRECT, INCIDENTAL, SPECIAL, EXEMPLARY, OR CONSEQUENTIAL DAMAGES (INCLUDING, BUT NOT LIMITED TO, PROCUREMENT OF SUBSTITUTE GOODS OR SERVICES; LOSS OF USE, DATA, OR PROFITS; OR BUSINESS INTERRUPTION) HOWEVER CAUSED AND ON ANY THEORY OF LIABILITY, WHETHER IN CONTRACT, STRICT LIABILITY, OR TORT (INCLUDING NEGLIGENCE OR OTHERWISE) ARISING IN ANY WAY OUT OF THE USE OF THIS SOFTWARE, EVEN IF ADVISED OF THE POSSIBILITY OF SUCH DAMAGE.

---- Part 5: Sparta, Inc copyright notice (BSD) ----

Copyright (c) 2003-2012, Sparta, Inc

All rights reserved.

Redistribution and use in source and binary forms, with or without modification, are permitted provided that the following conditions are met:

- * Redistributions of source code must retain the above copyright notice, this list of conditions and the following disclaimer.
- * Redistributions in binary form must reproduce the above copyright notice, this list of conditions and the following disclaimer in the documentation and/or other materials provided with the distribution.
- * Neither the name of Sparta, Inc nor the names of its contributors may be used to endorse or promote products derived from this software without specific prior written permission.

THIS SOFTWARE IS PROVIDED BY THE COPYRIGHT HOLDERS AND CONTRIBUTORS ``AS IS" AND ANY EXPRESS OR IMPLIED WARRANTIES, INCLUDING, BUT NOT LIMITED TO, THE IMPLIED WARRANTIES OF MERCHANTABILITY AND FITNESS FOR A PARTICULAR PURPOSE ARE DISCLAIMED. IN NO EVENT SHALL THE COPYRIGHT HOLDERS OR CONTRIBUTORS BE LIABLE FOR ANY DIRECT, INDIRECT, INCIDENTAL, SPECIAL, EXEMPLARY, OR CONSEQUENTIAL DAMAGES (INCLUDING, BUT NOT LIMITED TO, PROCUREMENT OF SUBSTITUTE GOODS OR SERVICES; LOSS OF USE, DATA, OR PROFITS; OR BUSINESS INTERRUPTION) HOWEVER CAUSED AND ON ANY THEORY OF LIABILITY, WHETHER IN CONTRACT, STRICT LIABILITY, OR TORT (INCLUDING NEGLIGENCE OR OTHERWISE) ARISING IN ANY WAY OUT OF THE USE OF THIS SOFTWARE, EVEN IF ADVISED OF THE POSSIBILITY OF SUCH DAMAGE.

---- Part 6: Cisco/BUPTNIC copyright notice (BSD) ----

Copyright (c) 2004, Cisco, Inc and Information Network Center of Beijing University of Posts and Telecommunications.

All rights reserved.

Redistribution and use in source and binary forms, with or without modification, are permitted provided that the following conditions are met:

- * Redistributions of source code must retain the above copyright notice, this list of conditions and the following disclaimer.
- * Redistributions in binary form must reproduce the above copyright notice, this list of conditions and the following disclaimer in the documentation and/or other materials provided with the distribution.
- * Neither the name of Cisco, Inc, Beijing University of Posts and Telecommunications, nor the names of their contributors may be used to endorse or promote products derived from this software without specific prior written permission.

THIS SOFTWARE IS PROVIDED BY THE COPYRIGHT HOLDERS AND CONTRIBUTORS ``AS IS'' AND ANY EXPRESS OR IMPLIED WARRANTIES, INCLUDING, BUT NOT LIMITED TO, THE IMPLIED WARRANTIES OF MERCHANTABILITY AND FITNESS FOR A PARTICULAR PURPOSE ARE DISCLAIMED. IN NO EVENT SHALL THE COPYRIGHT HOLDERS OR CONTRIBUTORS BE LIABLE FOR ANY DIRECT, INDIRECT, INCIDENTAL, SPECIAL, EXEMPLARY, OR CONSEQUENTIAL DAMAGES (INCLUDING, BUT NOT LIMITED TO, PROCUREMENT OF SUBSTITUTE GOODS OR SERVICES; LOSS OF USE, DATA, OR PROFITS; OR BUSINESS INTERRUPTION) HOWEVER CAUSED AND ON ANY THEORY OF LIABILITY, WHETHER IN CONTRACT, STRICT LIABILITY, OR TORT (INCLUDING NEGLIGENCE OR OTHERWISE) ARISING IN ANY WAY OUT OF THE USE OF THIS SOFTWARE, EVEN IF ADVISED OF THE POSSIBILITY OF SUCH DAMAGE.

---- Part 7: Fabasoft R&D Software GmbH & Co KG copyright notice (BSD) ----

Copyright (c) Fabasoft R&D Software GmbH & Co KG, 2003 oss@fabasoft.com

Author: Bernhard Penz <bernhard.penz@fabasoft.com>

Redistribution and use in source and binary forms, with or without modification, are permitted provided that the following conditions are met:

- * Redistributions of source code must retain the above copyright notice, this list of conditions and the following disclaimer.
- * Redistributions in binary form must reproduce the above copyright notice, this list of conditions and the following disclaimer in the documentation and/or other materials provided with the distribution.
- * The name of Fabasoft R&D Software GmbH & Co KG or any of its subsidiaries, brand or product names may not be used to endorse or promote products derived from this software without specific prior written permission.

THIS SOFTWARE IS PROVIDED BY THE COPYRIGHT HOLDER ``AS IS'' AND ANY EXPRESS OR IMPLIED WARRANTIES, INCLUDING, BUT NOT LIMITED TO, THE IMPLIED WARRANTIES OF MERCHANTABILITY AND FITNESS FOR A PARTICULAR PURPOSE ARE DISCLAIMED. IN NO EVENT SHALL THE COPYRIGHT HOLDER BE LIABLE FOR ANY DIRECT, INDIRECT, INCIDENTAL, SPECIAL, EXEMPLARY, OR CONSEQUENTIAL DAMAGES (INCLUDING, BUT NOT LIMITED TO, PROCUREMENT OF SUBSTITUTE GOODS OR SERVICES; LOSS OF USE, DATA, OR PROFITS; OR BUSINESS INTERRUPTION) HOWEVER CAUSED AND ON ANY THEORY OF LIABILITY, WHETHER

IN CONTRACT, STRICT LIABILITY, OR TORT (INCLUDING NEGLIGENCE OR OTHERWISE) ARISING IN ANY WAY OUT OF THE USE OF THIS SOFTWARE, EVEN IF ADVISED OF THE POSSIBILITY OF SUCH DAMAGE.

---- Part 8: Apple Inc. copyright notice (BSD) ----

Copyright (c) 2007 Apple Inc. All rights reserved.

Redistribution and use in source and binary forms, with or without modification, are permitted provided that the following conditions are met:

1. Redistributions of source code must retain the above copyright notice, this list of conditions and the following disclaimer.
2. Redistributions in binary form must reproduce the above copyright notice, this list of conditions and the following disclaimer in the documentation and/or other materials provided with the distribution.
3. Neither the name of Apple Inc. ("Apple") nor the names of its contributors may be used to endorse or promote products derived from this software without specific prior written permission.

THIS SOFTWARE IS PROVIDED BY APPLE AND ITS CONTRIBUTORS "AS IS" AND ANY EXPRESS OR IMPLIED WARRANTIES, INCLUDING, BUT NOT LIMITED TO, THE IMPLIED WARRANTIES OF MERCHANTABILITY AND FITNESS FOR A PARTICULAR PURPOSE ARE DISCLAIMED. IN NO EVENT SHALL APPLE OR ITS CONTRIBUTORS BE LIABLE FOR ANY DIRECT, INDIRECT, INCIDENTAL, SPECIAL, EXEMPLARY, OR CONSEQUENTIAL DAMAGES (INCLUDING, BUT NOT LIMITED TO, PROCUREMENT OF SUBSTITUTE GOODS OR SERVICES; LOSS OF USE, DATA, OR PROFITS; OR BUSINESS INTERRUPTION) HOWEVER CAUSED AND ON ANY THEORY OF LIABILITY, WHETHER IN CONTRACT, STRICT LIABILITY, OR TORT (INCLUDING NEGLIGENCE OR OTHERWISE) ARISING IN ANY WAY OUT OF THE USE OF THIS SOFTWARE, EVEN IF ADVISED OF THE POSSIBILITY OF SUCH DAMAGE.

---- Part 9: ScienceLogic, LLC copyright notice (BSD) ----

Copyright (c) 2009, ScienceLogic, LLC

All rights reserved.

Redistribution and use in source and binary forms, with or without modification, are permitted provided that the following conditions are met:

- * Redistributions of source code must retain the above copyright notice, this list of conditions and the following disclaimer.
- * Redistributions in binary form must reproduce the above copyright notice, this list of conditions and the following disclaimer in the documentation and/or other materials provided with the distribution.
- * Neither the name of ScienceLogic, LLC nor the names of its contributors may be used to endorse or promote products derived from this software without specific prior written permission.

THIS SOFTWARE IS PROVIDED BY THE COPYRIGHT HOLDERS AND CONTRIBUTORS "AS IS" AND ANY EXPRESS OR IMPLIED WARRANTIES, INCLUDING, BUT NOT LIMITED TO, THE IMPLIED WARRANTIES OF MERCHANTABILITY AND FITNESS FOR A PARTICULAR PURPOSE ARE DISCLAIMED. IN NO EVENT SHALL THE COPYRIGHT HOLDERS OR CONTRIBUTORS BE LIABLE FOR ANY DIRECT, INDIRECT, INCIDENTAL, SPECIAL, EXEMPLARY, OR CONSEQUENTIAL DAMAGES (INCLUDING, BUT NOT LIMITED TO, PROCUREMENT OF SUBSTITUTE GOODS OR SERVICES; LOSS OF USE, DATA, OR PROFITS; OR BUSINESS INTERRUPTION) HOWEVER

CAUSED AND ON ANY THEORY OF LIABILITY, WHETHER IN CONTRACT, STRICT LIABILITY, OR TORT (INCLUDING NEGLIGENCE OR OTHERWISE) ARISING IN ANY WAY OUT OF THE USE OF THIS SOFTWARE, EVEN IF ADVISED OF THE POSSIBILITY OF SUCH DAMAGE.

LEADTOOLS

Copyright (C) 1991-2009 LEAD Technologies, Inc.

CMap Resources

Copyright 1990-2009 Adobe Systems Incorporated.

All rights reserved.

Copyright 1990-2010 Adobe Systems Incorporated.

All rights reserved.

Redistribution and use in source and binary forms, with or without modification, are permitted provided that the following conditions are met:

Redistributions of source code must retain the above copyright notice, this list of conditions and the following disclaimer.

Redistributions in binary form must reproduce the above copyright notice, this list of conditions and the following disclaimer in the documentation and/or other materials provided with the distribution.

Neither the name of Adobe Systems Incorporated nor the names of its contributors may be used to endorse or promote products derived from this software without specific prior written permission.

THIS SOFTWARE IS PROVIDED BY THE COPYRIGHT HOLDERS AND CONTRIBUTORS "AS IS" AND ANY EXPRESS OR IMPLIED WARRANTIES, INCLUDING, BUT NOT LIMITED TO, THE IMPLIED WARRANTIES OF MERCHANTABILITY AND FITNESS FOR A PARTICULAR PURPOSE ARE DISCLAIMED. IN NO EVENT SHALL THE COPYRIGHT HOLDER OR CONTRIBUTORS BE LIABLE FOR ANY DIRECT, INDIRECT, INCIDENTAL, SPECIAL, EXEMPLARY, OR CONSEQUENTIAL DAMAGES (INCLUDING, BUT NOT LIMITED TO, PROCUREMENT OF SUBSTITUTE GOODS OR SERVICES; LOSS OF USE, DATA, OR PROFITS; OR BUSINESS INTERRUPTION) HOWEVER CAUSED AND ON ANY THEORY OF LIABILITY, WHETHER IN CONTRACT, STRICT LIABILITY, OR TORT (INCLUDING NEGLIGENCE OR OTHERWISE) ARISING IN ANY WAY OUT OF THE USE OF THIS SOFTWARE, EVEN IF ADVISED OF THE POSSIBILITY OF SUCH DAMAGE.

MIT License

Copyright (c) 1998, 1999, 2000 Thai Open Source Software Center Ltd

Permission is hereby granted, free of charge, to any person obtaining a copy of this software and associated documentation files (the "Software"), to deal in the Software without restriction, including without limitation the rights to use, copy, modify, merge, publish, distribute, sublicense, and/or sell copies of the Software, and to permit persons to whom the Software is furnished to do so, subject to the following conditions:

The above copyright notice and this permission notice shall be included in all copies or substantial portions of the Software.

THE SOFTWARE IS PROVIDED "AS IS", WITHOUT WARRANTY OF ANY KIND, EXPRESS OR IMPLIED, INCLUDING BUT NOT LIMITED TO THE WARRANTIES OF MERCHANTABILITY, FITNESS FOR A PARTICULAR PURPOSE AND NONINFRINGEMENT. IN NO EVENT SHALL THE AUTHORS OR COPYRIGHT HOLDERS BE LIABLE FOR ANY CLAIM, DAMAGES OR OTHER LIABILITY, WHETHER IN AN ACTION OF CONTRACT, TORT OR OTHERWISE, ARISING FROM, OUT OF OR IN CONNECTION WITH THE SOFTWARE OR THE USE OR OTHER DEALINGS IN THE SOFTWARE.

Copyright 2000 Computing Research Labs, New Mexico State University

Copyright 2001-2015 Francesco Zappa Nardelli

Permission is hereby granted, free of charge, to any person obtaining a copy of this software and associated documentation files (the "Software"), to deal in the Software without restriction, including without limitation the rights to use, copy, modify, merge, publish, distribute, sublicense, and/or sell copies of the Software, and to permit persons to whom the Software is furnished to do so, subject to the following conditions:

The above copyright notice and this permission notice shall be included in all copies or substantial portions of the Software.

THE SOFTWARE IS PROVIDED "AS IS", WITHOUT WARRANTY OF ANY KIND, EXPRESS OR IMPLIED, INCLUDING BUT NOT LIMITED TO THE WARRANTIES OF MERCHANTABILITY, FITNESS FOR A PARTICULAR PURPOSE AND NONINFRINGEMENT. IN NO EVENT SHALL THE COMPUTING RESEARCH LAB OR NEW MEXICO STATE UNIVERSITY BE LIABLE FOR ANY CLAIM, DAMAGES OR OTHER LIABILITY, WHETHER IN AN ACTION OF CONTRACT, TORT OR OTHERWISE, ARISING FROM, OUT OF OR IN CONNECTION WITH THE SOFTWARE OR THE USE OR OTHER DEALINGS IN THE SOFTWARE.

Written by Joel Sherrill <joel@OARcorp.com>.

COPYRIGHT (c) 1989-2000.

On-Line Applications Research Corporation (OAR).

Permission to use, copy, modify, and distribute this software for any purpose without fee is hereby granted, provided that this entire notice is included in all copies of any software which is or includes a copy or modification of this software.

THIS SOFTWARE IS BEING PROVIDED "AS IS", WITHOUT ANY EXPRESS OR IMPLIED WARRANTY. IN PARTICULAR, THE AUTHOR MAKES NO REPRESENTATION OR WARRANTY OF ANY KIND CONCERNING THE MERCHANTABILITY OF THIS SOFTWARE OR ITS FITNESS FOR ANY PARTICULAR PURPOSE.

(1) Red Hat Incorporated

Copyright (c) 1994-2009 Red Hat, Inc. All rights reserved.

This copyrighted material is made available to anyone wishing to use, modify, copy, or redistribute it subject to the terms and conditions of the BSD License. This program is distributed in the hope that it will be useful, but WITHOUT ANY WARRANTY expressed or implied, including the implied warranties of MERCHANTABILITY or FITNESS FOR A PARTICULAR PURPOSE. A copy of this license is available at <http://www.opensource.org/licenses>. Any Red Hat trademarks that are incorporated in the source code or documentation are not subject to the BSD License and may only be used or replicated with the express permission of Red Hat, Inc.

(2) University of California, Berkeley

Copyright (c) 1981-2000 The Regents of the University of California.

All rights reserved.

Redistribution and use in source and binary forms, with or without modification, are permitted provided that the following conditions are met:

- * Redistributions of source code must retain the above copyright notice, this list of conditions and the following disclaimer.
- * Redistributions in binary form must reproduce the above copyright notice, this list of conditions and the following disclaimer in the documentation and/or other materials provided with the distribution.
- * Neither the name of the University nor the names of its contributors may be used to endorse or promote products derived from this software without specific prior written permission.

THIS SOFTWARE IS PROVIDED BY THE COPYRIGHT HOLDERS AND CONTRIBUTORS "AS IS" AND ANY EXPRESS OR IMPLIED WARRANTIES, INCLUDING, BUT NOT LIMITED TO, THE IMPLIED WARRANTIES OF MERCHANTABILITY AND FITNESS FOR A PARTICULAR PURPOSE ARE DISCLAIMED. IN NO EVENT SHALL THE COPYRIGHT OWNER OR CONTRIBUTORS BE LIABLE FOR ANY DIRECT, INDIRECT, INCIDENTAL, SPECIAL, EXEMPLARY, OR CONSEQUENTIAL DAMAGES (INCLUDING, BUT NOT LIMITED TO, PROCUREMENT OF SUBSTITUTE GOODS OR SERVICES; LOSS OF USE, DATA, OR PROFITS; OR BUSINESS INTERRUPTION) HOWEVER CAUSED AND ON ANY THEORY OF LIABILITY, WHETHER IN CONTRACT, STRICT LIABILITY, OR TORT (INCLUDING NEGLIGENCE OR OTHERWISE) ARISING IN ANY WAY OUT OF THE USE OF THIS SOFTWARE, EVEN IF ADVISED OF THE POSSIBILITY OF SUCH DAMAGE.

The FreeType Project LICENSE

2006-Jan-27

Copyright 1996-2002, 2006 by

David Turner, Robert Wilhelm, and Werner Lemberg

Introduction

=====

The FreeType Project is distributed in several archive packages; some of them may contain, in addition to the FreeType font engine, various tools and contributions which rely on, or relate to, the FreeType Project.

This license applies to all files found in such packages, and which do not fall under their own explicit license. The license affects thus the FreeType font engine, the test programs, documentation and makefiles, at the very least.

This license was inspired by the BSD, Artistic, and IJG (Independent JPEG Group) licenses, which all encourage inclusion and use of free software in commercial and freeware products alike. As a consequence, its main points are that:

- o We don't promise that this software works. However, we will be interested in any kind of bug reports. ('as is' distribution)

- o You can use this software for whatever you want, in parts or full form, without having to pay us. ('royalty-free' usage)

- o You may not pretend that you wrote this software. If you use it, or only parts of it, in a program, you must acknowledge somewhere in your documentation that you have used the FreeType code. ('credits')

We specifically permit and encourage the inclusion of this software, with or without modifications, in commercial products.

We disclaim all warranties covering The FreeType Project and assume no liability related to The FreeType Project.

Finally, many people asked us for a preferred form for a credit/disclaimer to use in compliance with this license. We thus encourage you to use the following text:

""

Portions of this software are copyright © <year> The FreeType Project (www.freetype.org). All rights reserved.

""

Please replace <year> with the value from the FreeType version you actually use.

Legal Terms

=====

0. Definitions

Throughout this license, the terms 'package', 'FreeType Project', and 'FreeType archive' refer to the set of files originally distributed by the authors (David Turner, Robert Wilhelm, and Werner Lemberg) as the 'FreeType Project', be they named as alpha, beta or final release.

'You' refers to the licensee, or person using the project, where 'using' is a generic term including compiling the project's source code as well as linking it to form a 'program' or 'executable'.

This program is referred to as 'a program using the FreeType engine'.

This license applies to all files distributed in the original FreeType Project, including all source code, binaries and documentation, unless otherwise stated in the file in its original, unmodified form as distributed in the original archive.

If you are unsure whether or not a particular file is covered by this license, you must contact us to verify this.

The FreeType Project is copyright (C) 1996-2000 by David Turner, Robert Wilhelm, and Werner Lemberg. All rights reserved except as specified below.

1. No Warranty

THE FREETYPE PROJECT IS PROVIDED 'AS IS' WITHOUT WARRANTY OF ANY KIND, EITHER EXPRESS OR IMPLIED, INCLUDING, BUT NOT LIMITED TO, WARRANTIES OF MERCHANTABILITY AND FITNESS FOR A PARTICULAR PURPOSE. IN NO EVENT WILL ANY OF THE AUTHORS OR COPYRIGHT HOLDERS BE LIABLE FOR ANY DAMAGES CAUSED BY THE USE OR THE INABILITY TO USE, OF THE FREETYPE PROJECT.

2. Redistribution

This license grants a worldwide, royalty-free, perpetual and irrevocable right and license to use, execute, perform, compile, display, copy, create derivative works of, distribute and sublicense the FreeType Project (in both source and object code forms) and derivative works thereof for any purpose; and to authorize others to exercise some or all of the rights granted herein, subject to the following conditions:

- o Redistribution of source code must retain this license file ('FTL.TXT') unaltered; any additions, deletions or changes to the original files must be clearly indicated in accompanying documentation. The copyright notices of the unaltered, original files must be preserved in all copies of source files.

- o Redistribution in binary form must provide a disclaimer that states that the software is based in part of the work of the FreeType Team, in the distribution documentation. We also encourage you to put an URL to the FreeType web page in your documentation, though this isn't mandatory.

These conditions apply to any software derived from or based on the FreeType Project, not just the unmodified files. If you use our work, you must acknowledge us. However, no fee need be paid to us.

3. Advertising

Neither the FreeType authors and contributors nor you shall use the name of the other for commercial, advertising, or promotional purposes without specific prior written permission.

We suggest, but do not require, that you use one or more of the following phrases to refer to this software in your documentation or advertising materials: 'FreeType Project', 'FreeType Engine', 'FreeType library', or 'FreeType Distribution'.

As you have not signed this license, you are not required to accept it. However, as the FreeType Project is copyrighted material, only this license, or another one contracted with the authors, grants you the right to use, distribute, and modify it.

Therefore, by using, distributing, or modifying the FreeType Project, you indicate that you understand and accept all the terms of this license.

4. Contacts

There are two mailing lists related to FreeType:

- o freetype@nongnu.org

Discusses general use and applications of FreeType, as well as future and wanted additions to the library and distribution.

If you are looking for support, start in this list if you haven't found anything to help you in the documentation.

o freetype-devel@nongnu.org

Discusses bugs, as well as engine internals, design issues, specific licenses, porting, etc.

Our home page can be found at

<http://www.freetype.org>

--- end of FTL.TXT ---

The following applies only to products supporting Wi-Fi.

(c) 2009-2013 by Jeff Mott. All rights reserved.

Redistribution and use in source and binary forms, with or without modification, are permitted provided that the following conditions are met:

- * Redistributions of source code must retain the above copyright notice, this list of conditions, and the following disclaimer.
- * Redistributions in binary form must reproduce the above copyright notice, this list of conditions, and the following disclaimer in the documentation or other materials provided with the distribution.
- * Neither the name CryptoJS nor the names of its contributors may be used to endorse or promote products derived from this software without specific prior written permission.

THIS SOFTWARE IS PROVIDED BY THE COPYRIGHT HOLDERS AND CONTRIBUTORS "AS IS," AND ANY EXPRESS OR IMPLIED WARRANTIES, INCLUDING, BUT NOT LIMITED TO, THE IMPLIED WARRANTIES OF MERCHANTABILITY AND FITNESS FOR A PARTICULAR PURPOSE, ARE DISCLAIMED. IN NO EVENT SHALL THE COPYRIGHT HOLDER OR CONTRIBUTORS BE LIABLE FOR ANY DIRECT, INDIRECT, INCIDENTAL, SPECIAL, EXEMPLARY, OR CONSEQUENTIAL DAMAGES (INCLUDING, BUT NOT LIMITED TO, PROCUREMENT OF SUBSTITUTE GOODS OR SERVICES; LOSS OF USE, DATA, OR PROFITS; OR BUSINESS INTERRUPTION) HOWEVER CAUSED AND ON ANY THEORY OF LIABILITY, WHETHER IN CONTRACT, STRICT LIABILITY, OR TORT (INCLUDING NEGLIGENCE OR OTHERWISE) ARISING IN ANY WAY OUT OF THE USE OF THIS SOFTWARE, EVEN IF ADVISED OF THE POSSIBILITY OF SUCH DAMAGE.

Print Plug-In for Office Guide

- **General Notes (Print Plug-In for Office)**
- **The Features of Print Plug-In for Office**
- **When Print Plug-In for Office is Not Displayed**

- **To Start from Microsoft Word**
- **Print Matching Roll Width (Word)**
- **Borderless Printing (Word)**
- **Multi-Page Printing (Word)**
- **Register the Settings (Word)**
- **Print Using Registered Settings (Word)**
- **Portrait Orientation/Landscape Orientation (Word)**

- **To Start from Microsoft PowerPoint**
- **Print Matching Roll Width (PowerPoint)**
- **Borderless Printing (PowerPoint)**
- **Multi-Page Printing (PowerPoint)**
- **Register the Settings (PowerPoint)**
- **Print Using Registered Settings (PowerPoint)**
- **Portrait Orientation/Landscape Orientation (PowerPoint)**

- **To Start from Microsoft Excel**
- **Print Entire Sheet (Excel)**
- **Print Selected Area (Excel)**
- **Configuring Binding (Excel)**

- **Configuring Special Settings**

General Notes (Print Plug-In for Office)

When using Print Plug-In for Office, the following restrictions apply. Please familiarize yourself with them before using it.

- Print Plug-In for Office supports the following printer drivers and **Microsoft Office**.
 - Printer driver
 - Canon imagePROGRAF Printer Driver 2008 Ver. 3.95 or later
 - **Microsoft Office**
 - Microsoft Word(2007/2010/2013/2016)
 - Microsoft PowerPoint(2007/2010/2013/2016)
 - Microsoft Excel(2007/2010/2013/2016)
- This guide primarily provides explanations using the screens that appear when you use the Windows 10 operating system (hereafter, Windows 10).
- The **imagePROGRAF Print Plug-In** toolbar/ribbon might not be displayed in **Microsoft Office** after installing Print Plug-In for Office. For details, refer to "[When Print Plug-In for Office is Not Displayed](#)".
- If you opened the Office document from **Internet Explorer**, the software will not run correctly.
- If you are editing an embedded object or link object, the software will not run correctly.
- If you added the **imagePROGRAF Print Plug-In** ribbon to the **Microsoft Office** Quick Access toolbar, the software will not run correctly.
- For some data, an error dialog may appear because the information required for printing or data analysis cannot be acquired. If this occurs, print from the printer driver.
- When you install this software, the virtual printer **Canon imagePROGRAF PrintPlugIn** may be installed. If you want to use this software, do not uninstall the virtual printer **Canon imagePROGRAF PrintPlugIn**.
- The layout may collapse if you create a form using existing data. If that is the case, modify the data again.
- If the range selected in **Microsoft Excel** is too large, it will not be possible to analyze the data. Select a smaller range and then run the analysis.
- The Print Plug-In for Office cannot be opened for a shared printer.

The Features of Print Plug-In for Office

Print Plug-In for Office is a Plug-In that enables easy printing from **Microsoft Office**.

- It is displayed on the toolbar/ribbon, so it is easily accessible.
- It can be set by just selecting from the Wizard.
- **Large-Format Printing** custom size can also be set in the Wizard from **Microsoft Word** or **Microsoft PowerPoint**.
- Custom size can be set automatically from **Microsoft Excel**.
- The layout can be checked before printing by starting the preview screen.

Note

- 64 bit edition Windows OS operates only on WOW64 (32 bit emulator).

When Print Plug-In for Office is Not Displayed

Buttons such as **Start imagePROGRAF Print Plug-In** sometimes do not appear in the **Word**, **PowerPoint** and **Excel** Office applications, and the Print Plug-In for Office functions are not available.

In this event, re-install Print Plug-In for Office.

You can also enable add-ins to display Print Plug-In for Office.

See below for the procedure for re-installing the plug-in or enabling add-ins.

Re-installing Print Plug-In for Office

If a problem occurs, such as the system or an application terminating abnormally, the **Microsoft Office** application disables add-ins as a safety precaution.

In this event, you will need to re-install Print Plug-In for Office to display the **imagePROGRAF Print Plug-In** toolbar/ribbon.

Note

- You cannot re-install Print Plug-In for Office once an Office application is running. When the message appears, select **Cancel** and close the active Office application.

Re-install Print Plug-In for Office as follows:

1. Close **Microsoft Office** if it is open.
2. Install Print Plug-In for Office.

Enabling Print Plug-In for Office for items disabled in Office applications

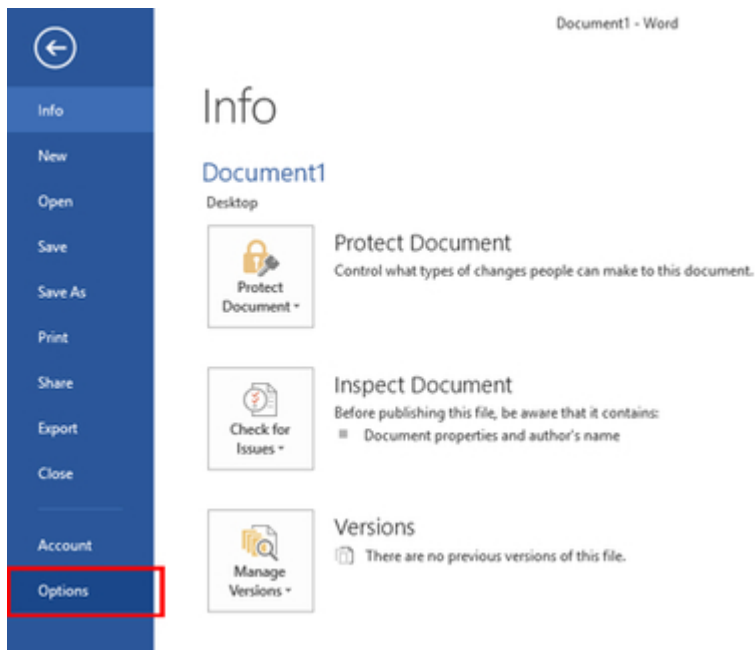
If a problem occurs, such as the system or an application terminating abnormally, the **Microsoft Office** application disables add-ins as a safety precaution.

In this event, you will need to restore the disabled add-ins in order to display the **imagePROGRAF Print Plug-In** toolbar/ribbon.

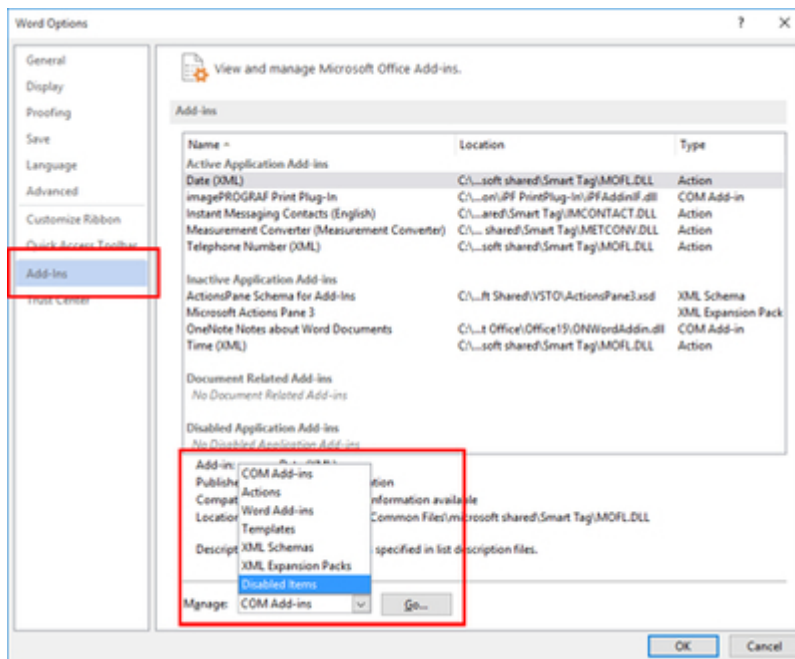
Use the procedure below to restore the add-ins disabled by **Microsoft Office**.

- For **Microsoft Office 2010 or later**

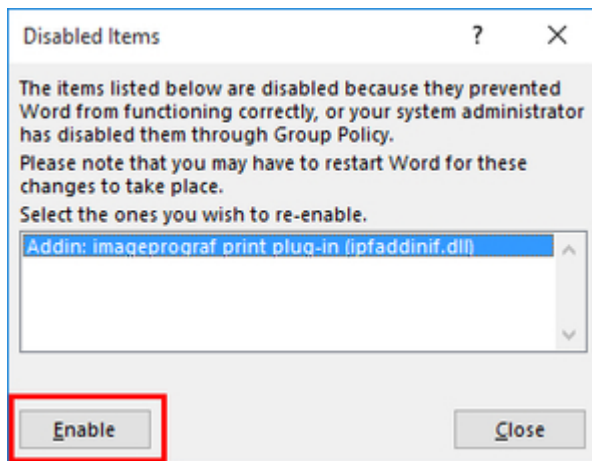
1. Select **Options** from the **File** menu.



- From the list on the left side of the <application name> options dialog box, select **Add-ins**.
- Select **Disabled Items** in the **Manage** combo box and click the **Go** button.



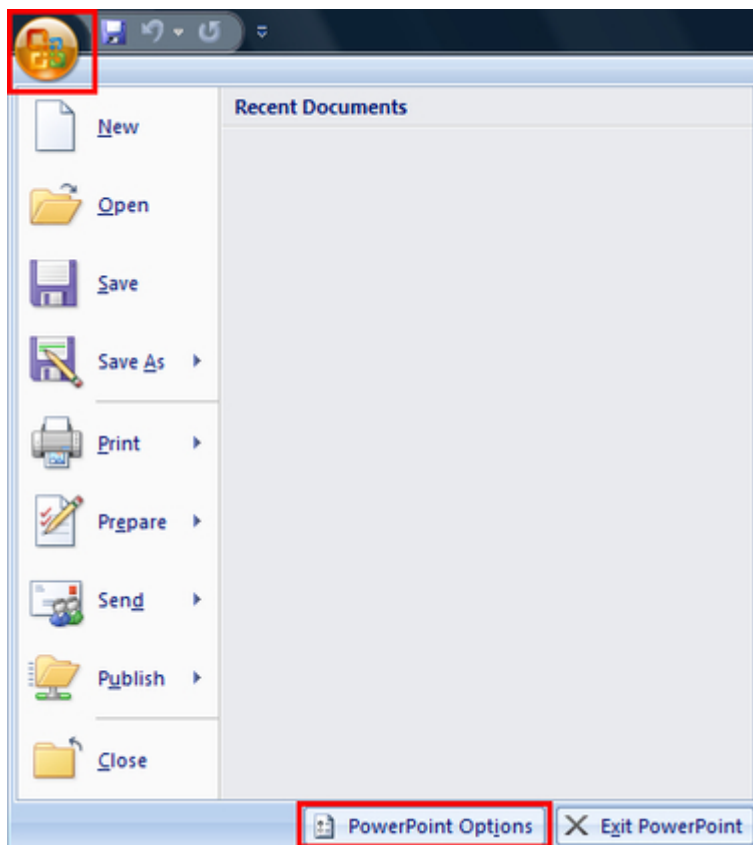
- If **Addin imageprograf print plug-in (ipfaddinif.dll)** is displayed in the **Disabled Items** dialog box, select it and click the **Enable** button.



5. Close all the dialog boxes and restart the Office application.

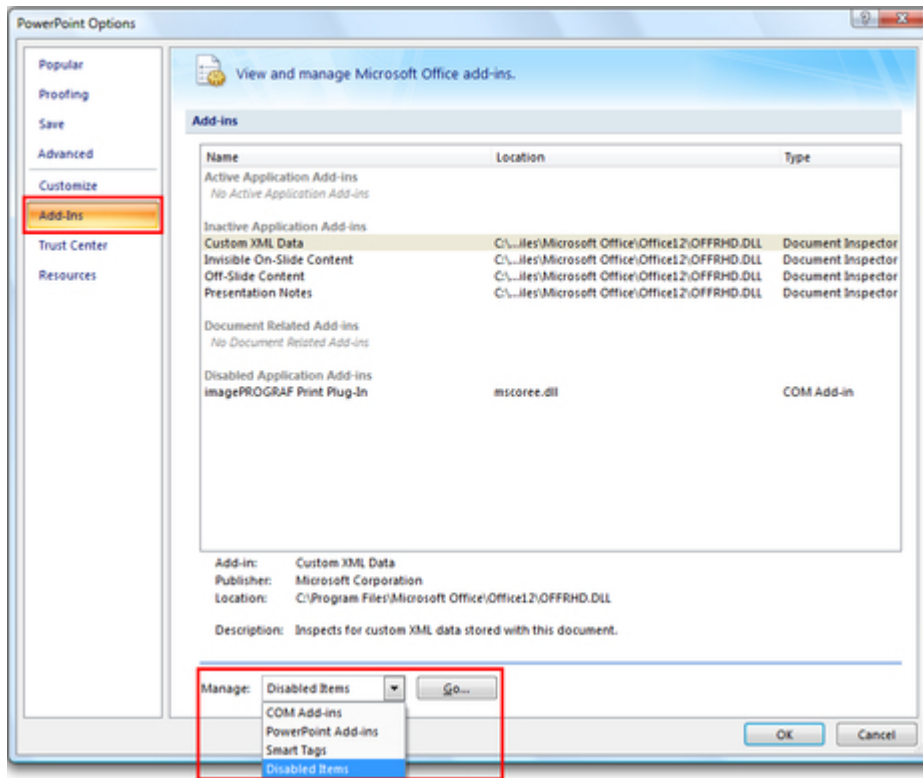
• For **Microsoft Office 2007**

1. Click the **Office** button and then click the **<application name> options** button.

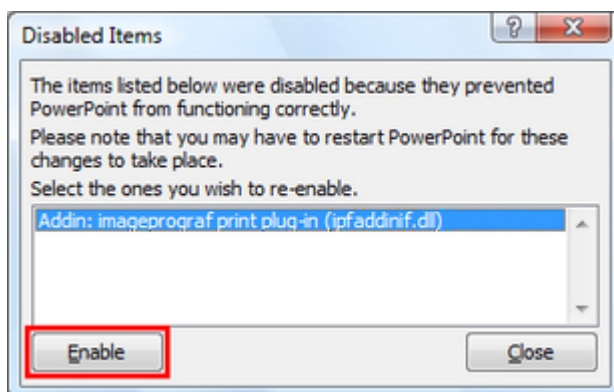


2. From the list on the left side of the **<application name> options** dialog box, select **Add-ins**.

3. Select **Disabled Items** in the **Manage** combo box and click the **Go** button.



4. If **Addin imageprograf print plug-in (ipfaddinif.dll)** is displayed in the **Disabled Items** dialog box, select it and click the **Enable** button.



5. Close all the dialog boxes and restart the Office application.

To Start from Microsoft Word

Below are the steps to start **Print Plug-In for Office** from **Microsoft Word**.

1. Start **Microsoft Word**.
2. If **Start imagePROGRAF Print Plug-In** is displayed on the toolbar/ribbon, click it.



Important

- If the **imagePROGRAF Print Plug-In** toolbar/ribbon is not displayed, refer to the following.
 - "[When Print Plug-In for Office is Not Displayed](#)"

3. Check that the **imagePROGRAF Print Plug-In** toolbar/ribbon is displayed.



4. Click the buttons on the toolbar/ribbon according to the items you want to set.

- **imagePROGRAF** (Menu)

Displays the **About**, **Help**, and **Special Settings** dialog boxes.

You can change the settings using the **Special Settings** dialog box.

Refer to "[Configuring Special Settings](#)" for details.

- **Canon** (Printer list)

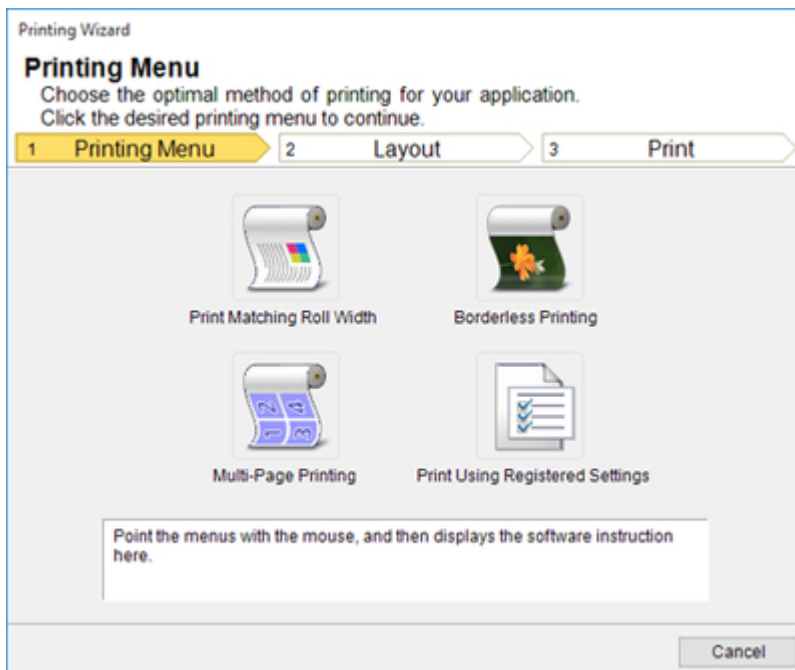
Select Printer.

If you select **Show All Printers**, the printers will appear again. Select this when you want to display all printers or update the display.



- **Print** (**Print** Button)

The print Wizard is displayed.



The settings **Print Matching Roll Width**, **Borderless Printing**, **Multi-Page Printing**, and **Print Using Registered Settings** can be set.

▶▶▶ Important

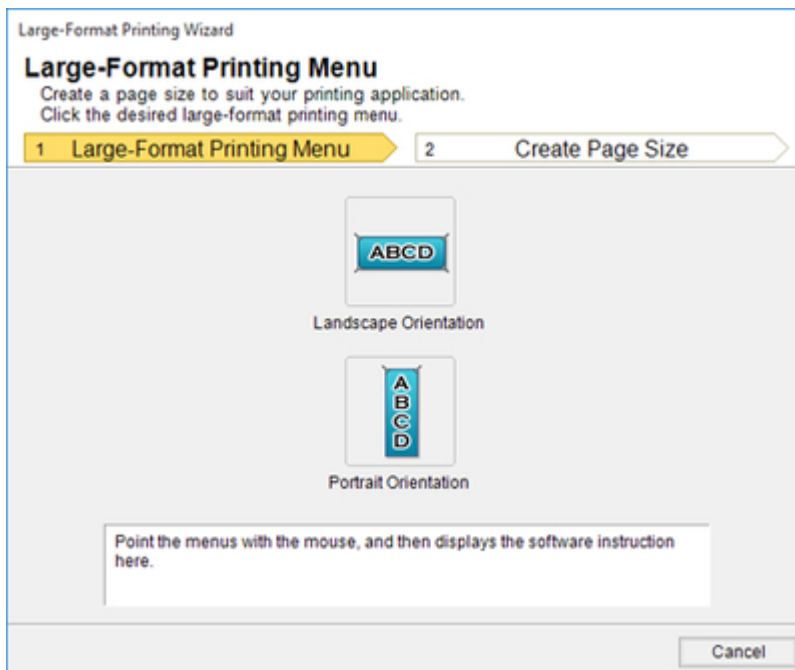
- If you want to change the display to another file or application while the **Printing Wizard** is open, close the **Printing Wizard** dialog box. Otherwise, you may not be able to change displays or operate the toolbar/ribbon.



- **Paper Settings** (**Paper Settings** Button)

Large-Format Wizard is displayed.

Settings for Portrait or Landscape Orientation can be set.



▶▶▶ Important

- If you want to change the display to another file or application while the **Large-Format Printing Wizard** is open, close the **Large-Format Printing Wizard** dialog box. Otherwise, you may not be able to change displays or operate the toolbar/ribbon.
- The layout may collapse if you create a form using existing data. If that is the case, modify the data again.

Print Matching Roll Width (Word)

Prints to the edge of the roll width. You can print large exhibits and posters, and also print Portrait and Landscape orientations made in **Large-Format Printing Wizard**.

1. Start **Microsoft Word**.
2. If **Start imagePROGRAF Print Plug-In** is displayed on the toolbar/ribbon, click it.

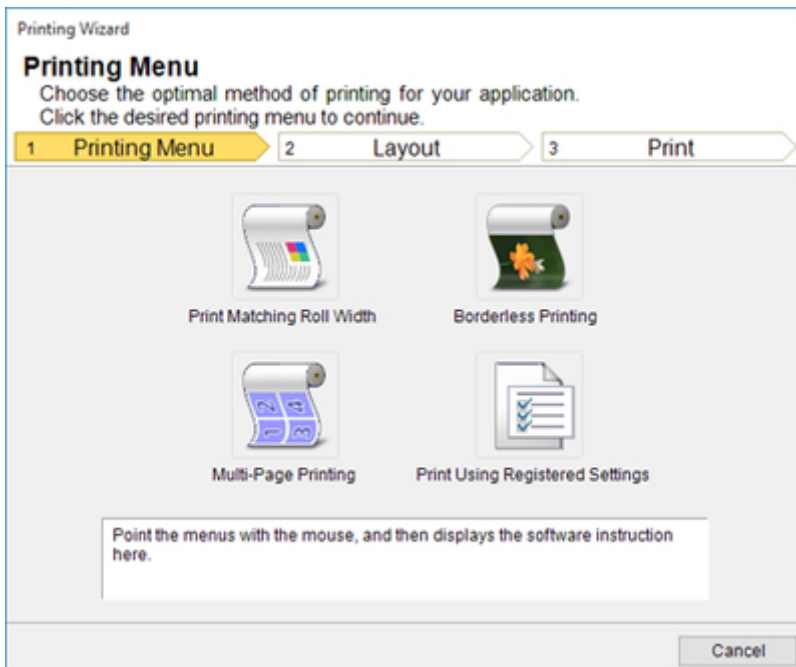


3. Click **Print** from the **imagePROGRAF Print Plug-In** toolbar/ribbon.



The **Printing Wizard** dialog box is displayed.

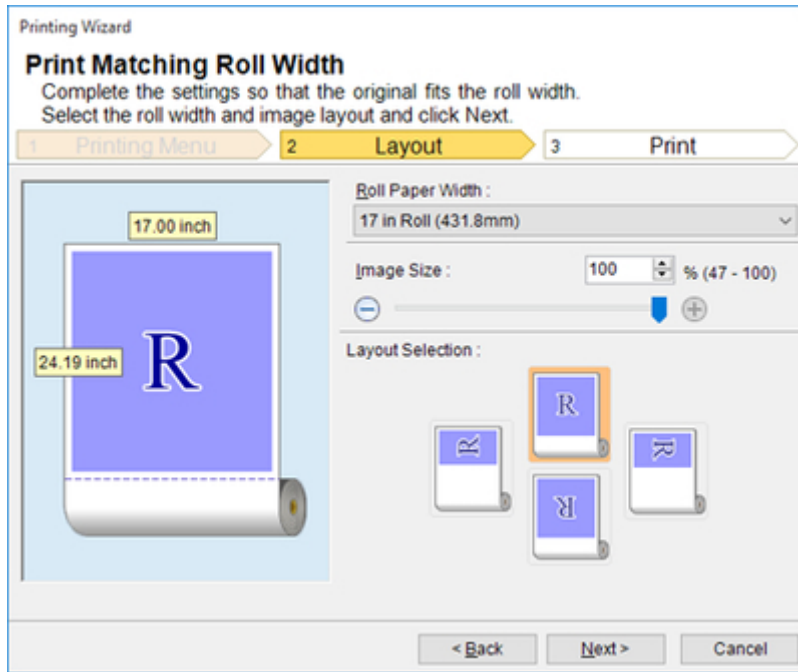
4. Click **Print Matching Roll Width**.



»»» Important

- If you want to change the display to another file or application while the **Printing Wizard** is open, close the **Printing Wizard** dialog box. Otherwise, you may not be able to change displays or operate the toolbar/ribbon.

5. Select **Roll Paper Width** that is set in the printer.

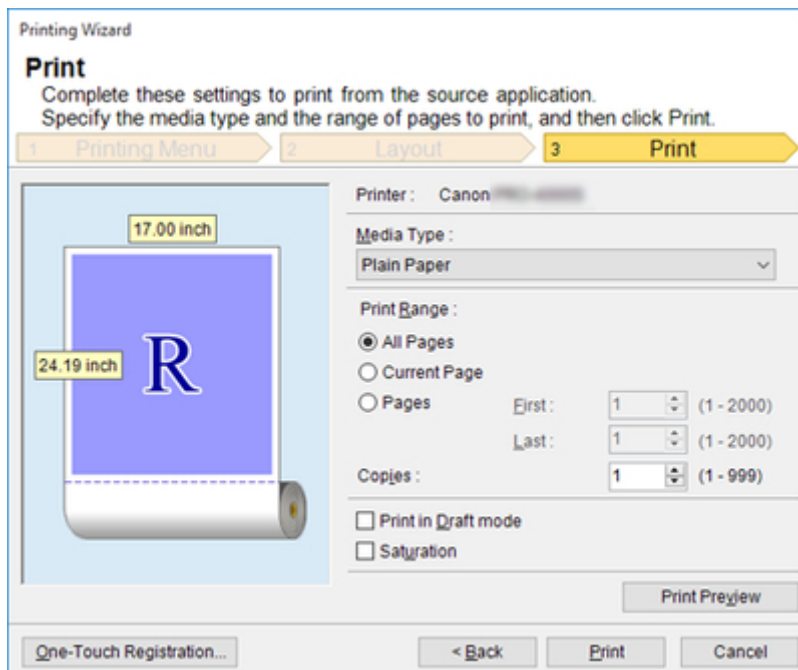


6. Select image size.

7. Select layout.

8. Click the **Next** button.

9. Select **Media Type**.



10. Select **Print Range** from **All Pages**, **Current Page**, and **Pages**.

If **Pages** is selected, enter the number of pages.

11. Enter **Copies**.

▶▶▶ Note

- When **Print in Draft mode** is selected, printing is fast but the print quality is poor.
- When **Saturation** is selected, you can print posters, etc., vividly.
- The settings are registered when the **One-Touch Registration** is pressed. This is convenient if you need to print multiple times using the same setting.
- Press the **Print Preview** button to display the preview screen. You can check and make changes to the layout in the preview screen.
- When you print to the edge of the roll width, the maximum length will be the lesser of 5.587 times the roll paper width, or 708.7 inches (18.0 m).

12. Click **Print** button.

Printing begins.

Borderless Printing (Word)

Prints up to the border of the media. Photos and posters can be printed without worrying about margins.

1. Start **Microsoft Word**.
2. If **Start imagePROGRAF Print Plug-In** is displayed on the toolbar/ribbon, click it.

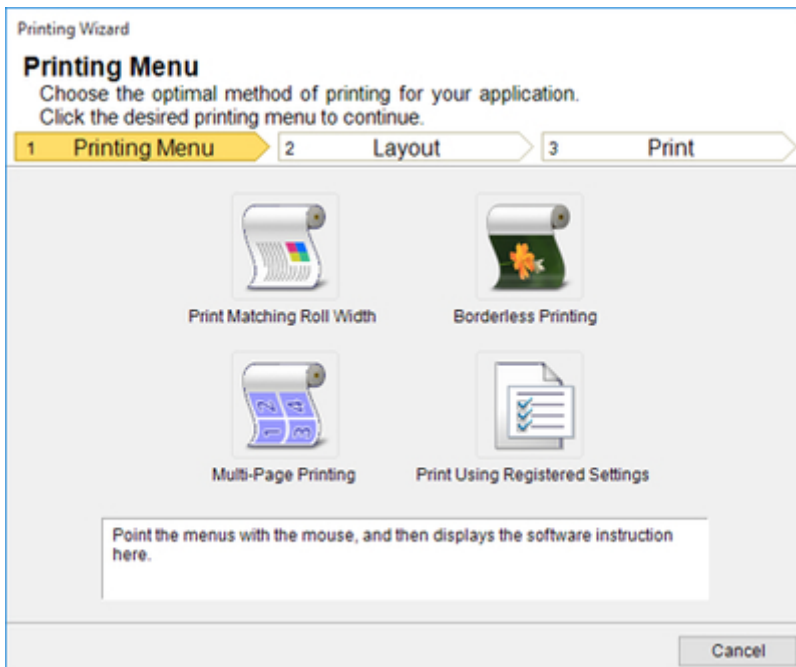


3. Click **Print** from the **imagePROGRAF Print Plug-In** toolbar/ribbon.



The **Printing Wizard** dialog box is displayed.

4. Click **Borderless Printing**.

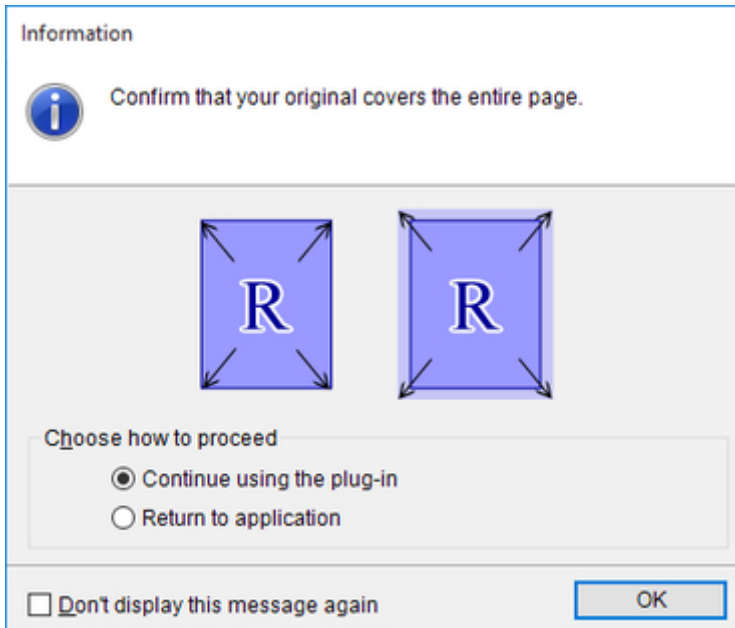


»»» Important

- If you want to change the display to another file or application while the **Printing Wizard** is open, close the **Printing Wizard** dialog box. Otherwise, you may not be able to change displays or operate the toolbar/ribbon.

A confirmation dialog box is displayed.

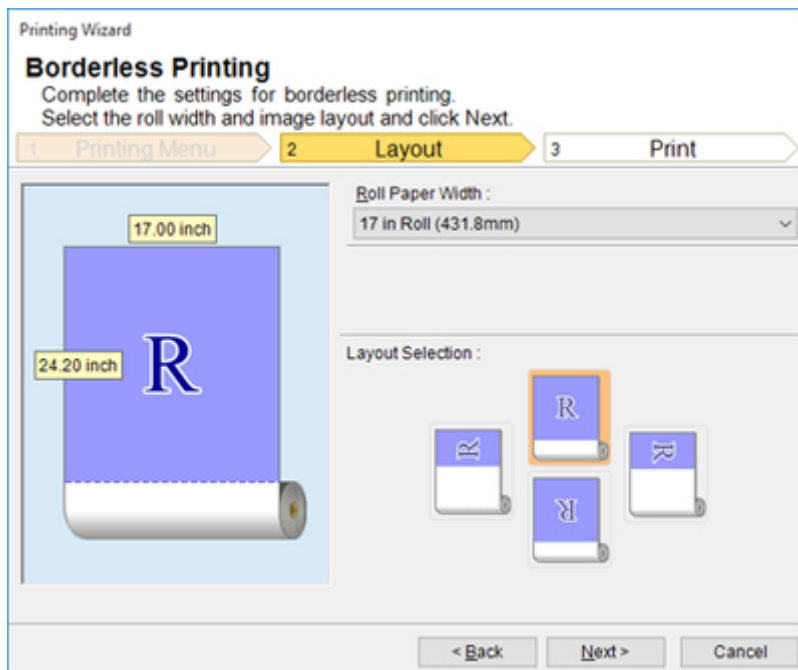
5. If the data fills up the page, confirm that **Continue using the plug-in** is selected in **Choose how to proceed** and click **OK** button.



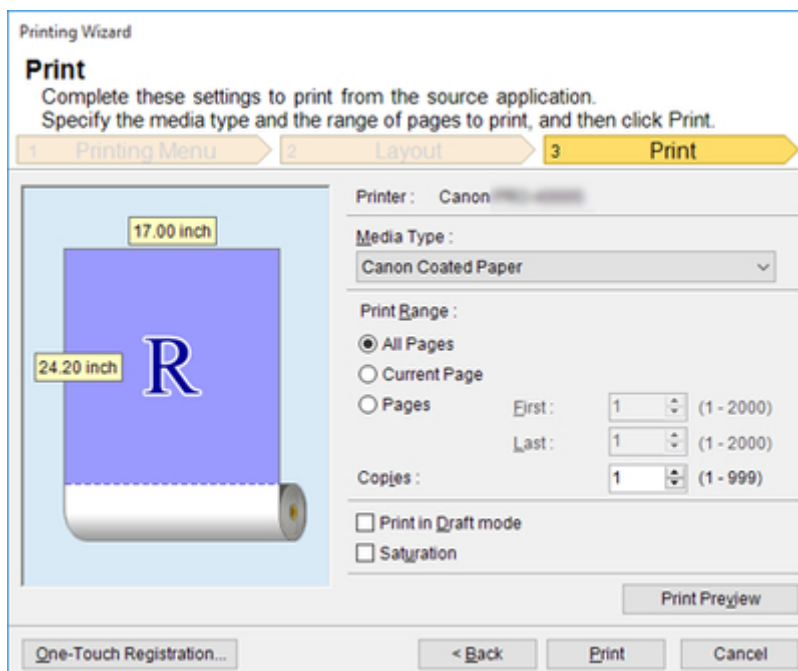
»»» Note

- To adjust the data, select **Return to application**, and then click **OK** button. **Print Plug-In for Office** closes, and you return to the application.

6. Select **Roll Paper Width** that is set in the printer.



7. Select layout.
8. Click the **Next** button.
9. Select **Media Type**.



10. Select **Print Range** from **All Pages**, **Current Page**, and **Pages**.
If **Pages** is selected, enter the number of pages.
11. Enter **Copies**.

▶▶▶ Note

- When **Print in Draft mode** is selected, printing is fast but the print quality is poor.
- When **Saturation** is selected, you can print posters, etc., vividly.
- The settings are registered when the **One-Touch Registration** is pressed. This is convenient if you need to print multiple times using the same setting.
- Press the **Print Preview** button to display the preview screen. You can check and make changes to the layout in the preview screen.
- The maximum length for Borderless Printing is the lesser of 5.587 times the roll paper width, or 708.7 inches (18.0 m).

12. Click **Print** button.

Printing begins.

Multi-Page Printing (Word)

Prints multiple pages as one page. You can print handouts into a single page, or print matter with many pages.

1. Start **Microsoft Word**.
2. If **Start imagePROGRAF Print Plug-In** is displayed on the toolbar/ribbon, click it.

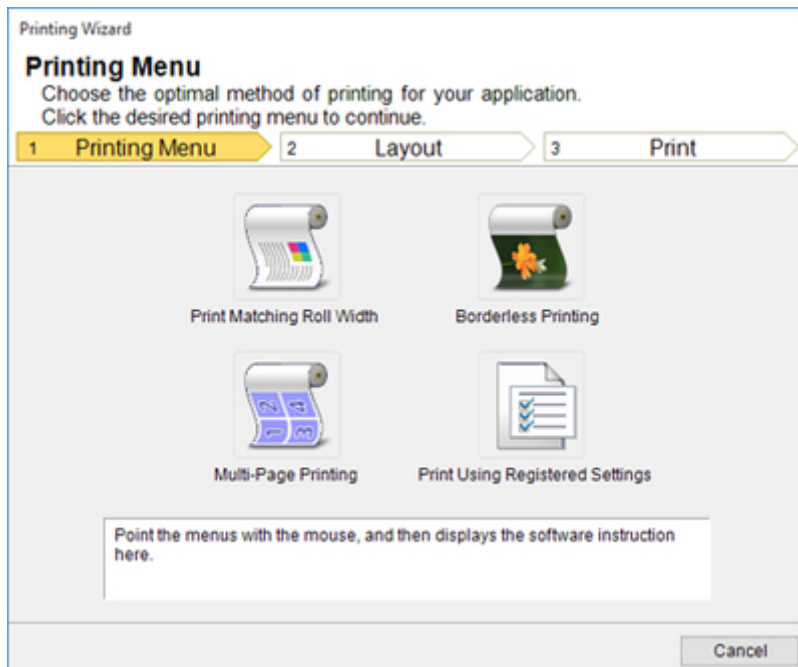


3. Click **Print** from the **imagePROGRAF Print Plug-In** toolbar/ribbon.



The **Printing Wizard** dialog box is displayed.

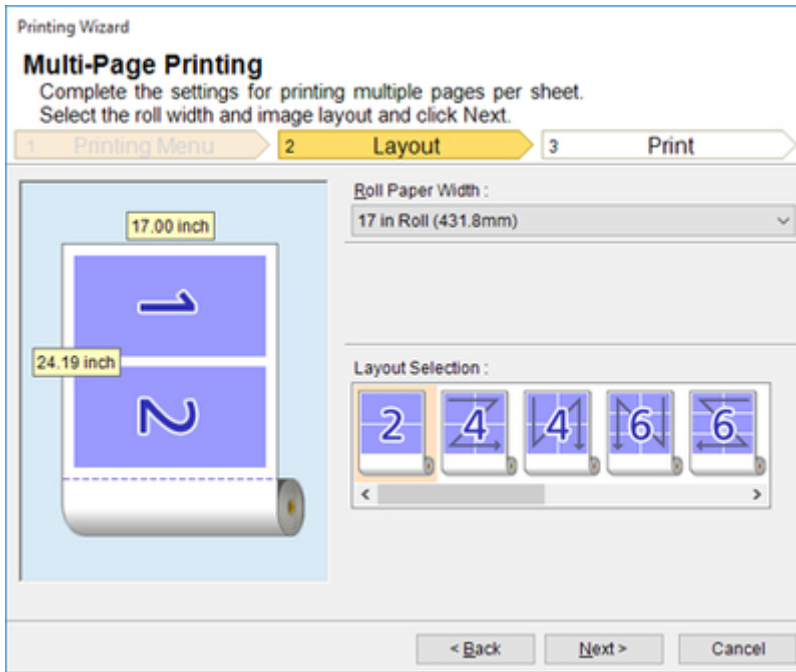
4. Click **Multi-Page Printing**.



»» Important

- If you want to change the display to another file or application while the **Printing Wizard** is open, close the **Printing Wizard** dialog box. Otherwise, you may not be able to change displays or operate the toolbar/ribbon.

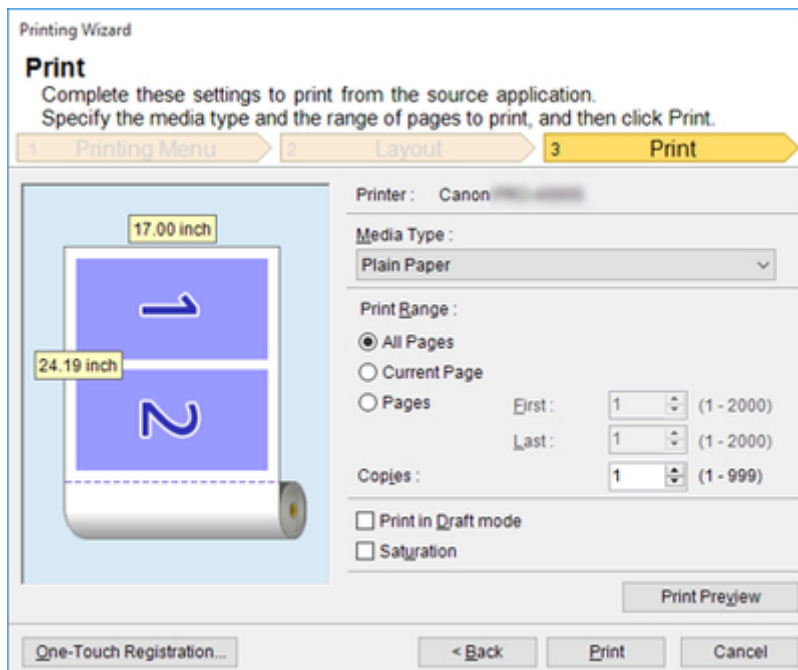
5. Select **Roll Paper Width** that is set in the printer.



6. Select layout from **Layout Selection**.

7. Click the **Next** button.

8. Select **Media Type**.



9. Select **Print Range** from **All Pages**, **Current Page**, and **Pages**.

If **Pages** is selected, enter the number of pages.

10. Enter **Copies**.

▶▶▶ Note

- When **Print in Draft mode** is selected, printing is fast but the print quality is poor.
- When **Saturation** is selected, you can print posters, etc., vividly.
- The settings are registered when the **One-Touch Registration** is pressed. This is convenient if you need to print multiple times using the same setting.
- Press the **Print Preview** button to display the preview screen. You can check and make changes to the layout in the preview screen.
- The maximum length for Multi-Page Printing is the lesser of 5.587 times the roll paper width, or 708.7 inches (18.0 m).

11. Click **Print** button.

Printing begins.

Register the Settings (Word)

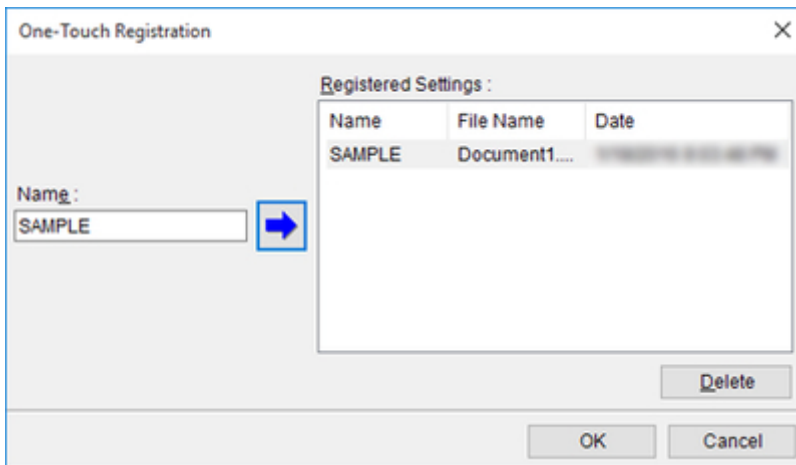
If you are going to print multiple times using the same setting, you can select **One-Touch Registration**. Registered settings can be recalled from **Print Using Registered Settings**.

1. Set up to the **Print** screen from **Print Matching Roll Width**, **Borderless Printing** or **Multi-Page Printing** of **Printing Menu**.

▶▶▶Note

- Up to 20 items can be registered.
- The available settings are as follows.
 - [Print Matching Roll Width \(Word\)](#)
 - [Borderless Printing \(Word\)](#)
 - [Multi-Page Printing \(Word\)](#)

2. Click the **One-Touch Registration** button.
3. Enter name in **Name**.



Up to 31 characters can be entered.

4. Click .

The name you entered is displayed in **Registered Settings**.

5. Click **OK**, and return to the **Print** screen.
6. Click **Print** to print, and click **Cancel** to cancel the print.

▶▶▶ Note

- Clicking **Cancel** in the **Print** screen will not delete the registered settings.

Print Using Registered Settings (Word)

Prints using the registered settings.

1. Start **Microsoft Word**.
2. If **Start imagePROGRAF Print Plug-In** is displayed on the toolbar/ribbon, click it.

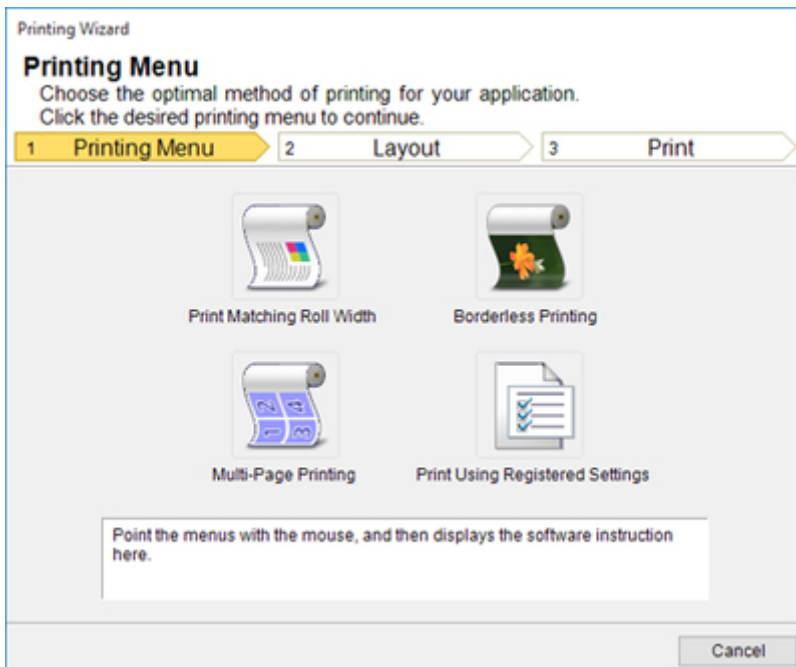


3. Click **Print** from the **imagePROGRAF Print Plug-In** toolbar/ribbon.



The **Printing Wizard** dialog box is displayed.

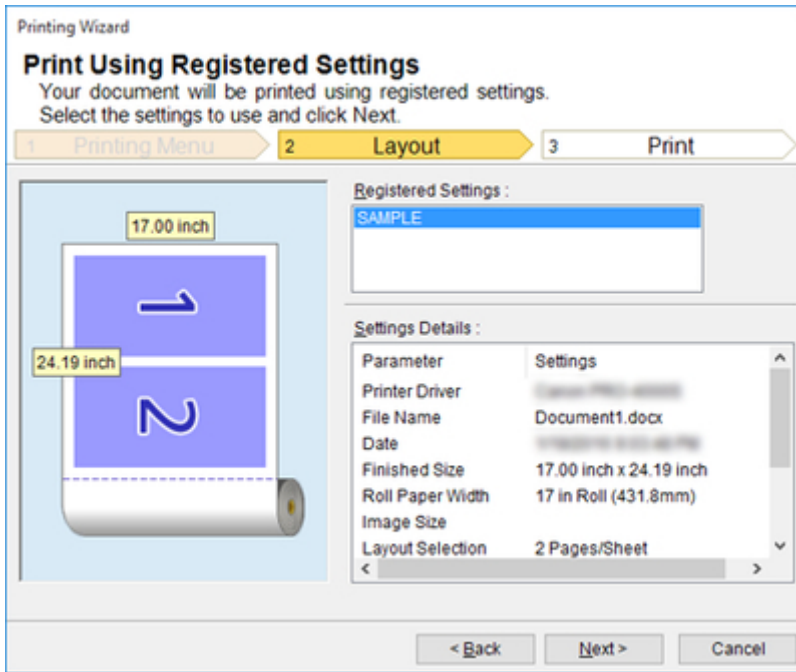
4. Click **Print Using Registered Settings**.



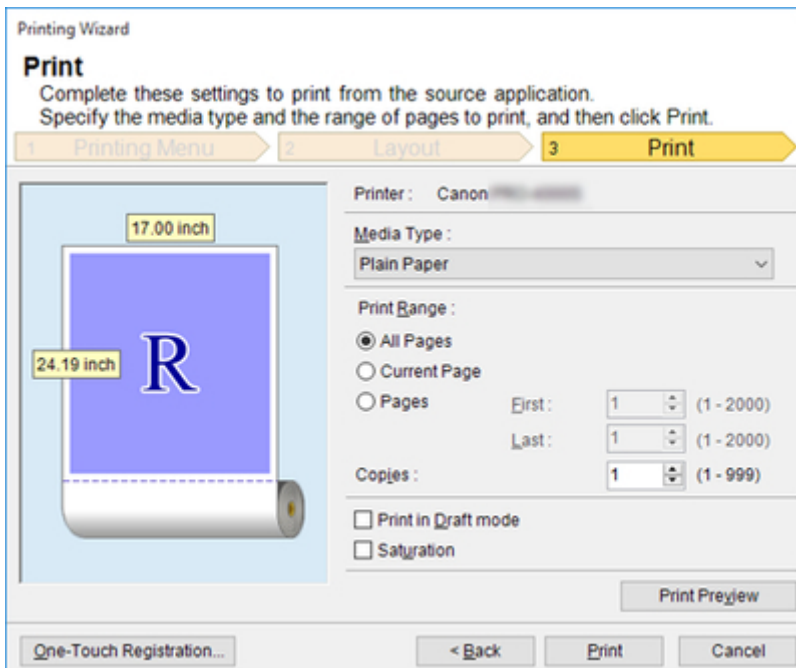
►►► Important

- If you want to change the display to another file or application while the **Printing Wizard** is open, close the **Printing Wizard** dialog box. Otherwise, you may not be able to change displays or operate the toolbar/ribbon.

5. Click the **Next** button.



6. Select **Media Type**.



7. Select **Print Range** from **All Pages**, **Current Page**, or **Pages**.

If **Pages** is selected, enter the number of pages.

8. Enter **Copies**.

▶▶▶Note

- When **Print in Draft mode** is selected, printing is fast but the print quality is poor.
- When **Saturation** is selected, you can print posters, etc., vividly.
- Press the **Print Preview** button to display the preview screen. You can check and make changes to the layout in the preview screen.
- The maximum print length when printing with the registered settings is the lesser of 5.587 times the roll paper width, or 708.7 inches (18.0 m).

9. Click **Print** button.

Printing begins.

Portrait Orientation/Landscape Orientation (Word)

Print to the edge of the roll width. You can print large exhibits and posters, or print the Landscape or Portrait Orientation Page Sizes made in the **Large-Format Printing Wizard**.

Create Page Size in Portrait or Landscape Orientation.

Use the **Large-Format Printing Wizard** to create portrait page sizes for Potrait Orientation, and landscape page sizes for Landscape Orientation.

1. Start **Microsoft Word**.
2. If **Start imagePROGRAF Print Plug-In** is displayed, click it.



3. Click **Paper Settings** from the **imagePROGRAF Print Plug-In** toolbar/ribbon.

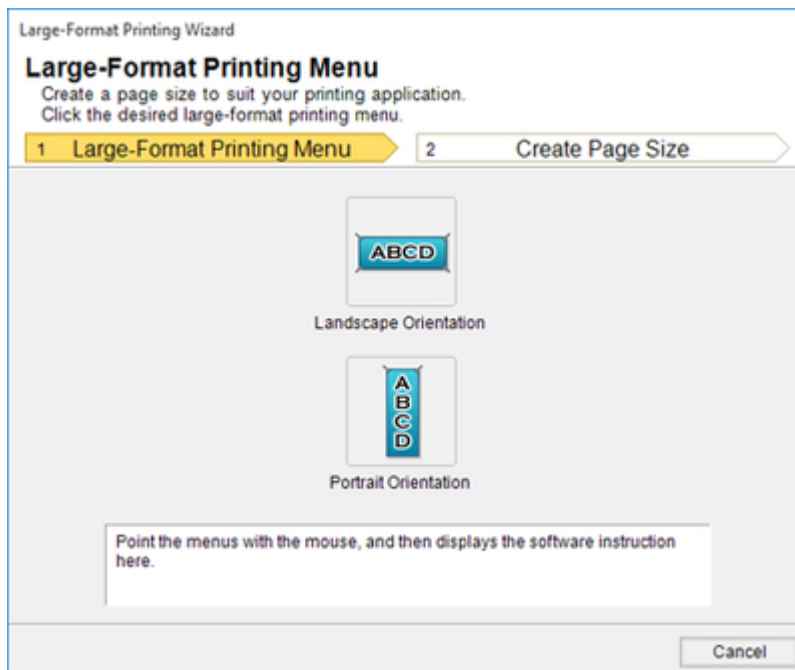


The **Large-Format Printing Wizard** dialog box is displayed.

▶▶▶Note

- If you want to change the display to another file or application while the **Large-Format Printing Wizard** is open, close the **Large-Format Printing Wizard** dialog box. Otherwise, you may not be able to change displays or operate the toolbar/ribbon.

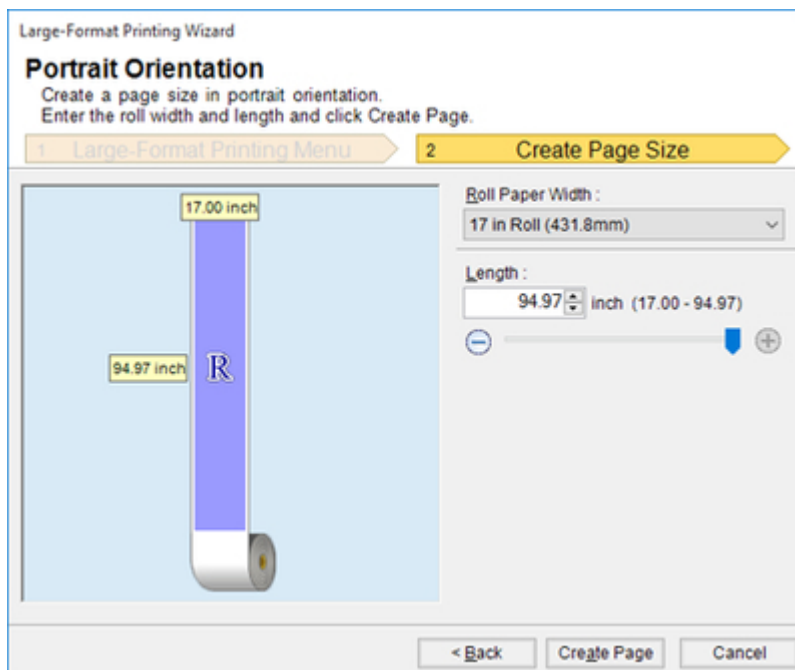
4. Click **Portrait Orientation** or **Landscape Orientation**.



➤➤➤ **Note**

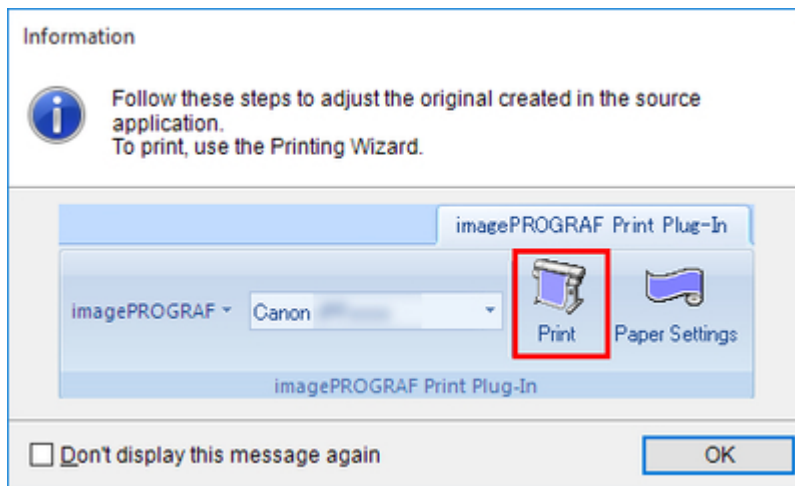
- The steps taken to create a Portrait Page Size will be used as an example to explain the procedure.

5. Adjust **Length** from the list-box or slide-bar.



6. Click the **Create Page** button.

7. Click **OK** if the message is displayed.



8. Edit and create the document.

▶▶▶ Note

- Printing is done in **Print Matching Roll Width** of the **Printing Wizard**. For details on **Print Matching Roll Width**, see "[Print Matching Roll Width \(Word\)](#)."

▶▶▶ Important

- The layout may collapse if you create a form using existing data. If that is the case, modify the data again.

To Start from Microsoft PowerPoint

Below are the steps to start **Print Plug-In for Office** from **Microsoft PowerPoint**.

1. Start **Microsoft PowerPoint**.
2. If **Start imagePROGRAF Print Plug-In** is displayed on the toolbar/ribbon, click it.



▶▶▶ Important

- If the **imagePROGRAF Print Plug-In** toolbar/ribbon is not displayed, refer to the following.
 - "[When Print Plug-In for Office is Not Displayed](#)"

3. Check that the **imagePROGRAF Print Plug-In** toolbar/ribbon is displayed.



4. Click the buttons on the toolbar/ribbon according to the items you want to set.

- **imagePROGRAF** (Menu)

Displays the **About**, **Help**, and **Special Settings** dialog boxes.

You can change the settings using the **Special Settings** dialog box.

Refer to "[Configuring Special Settings](#)" for details.

- **Canon** (Printer list)

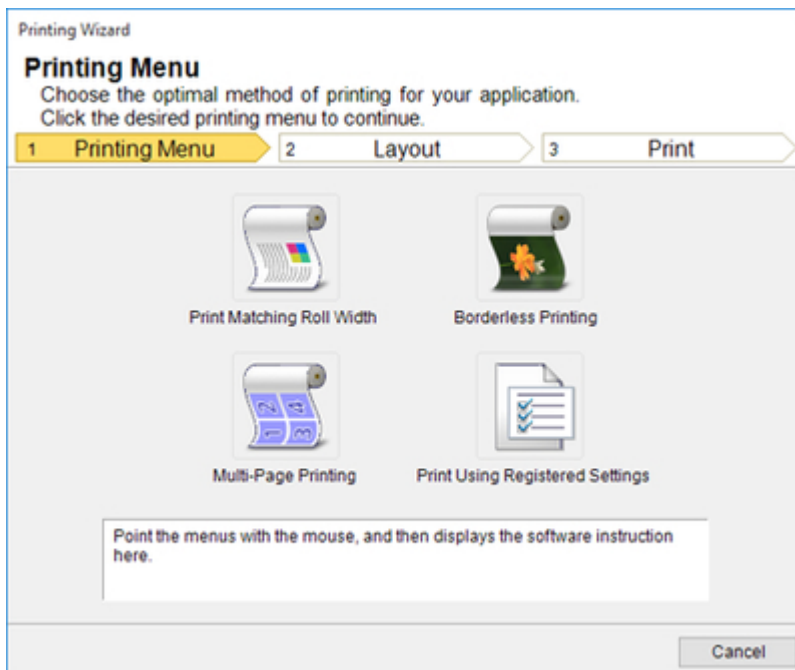
Select Printer.

If you select **Show All Printers**, the printers will appear again. Select this when you want to display all printers or update the display.



- **Print** (**Print** Button)

The print Wizard is displayed.



The settings **Print Matching Roll Width**, **Borderless Printing**, **Multi-Page Printing**, and **Print Using Registered Settings** can be set.

▶▶▶ Important

- If you want to change the display to another file or application while the **Printing Wizard** is open, close the **Printing Wizard** dialog box. Otherwise, you may not be able to change displays or operate the toolbar/ribbon.

▶▶▶ Note

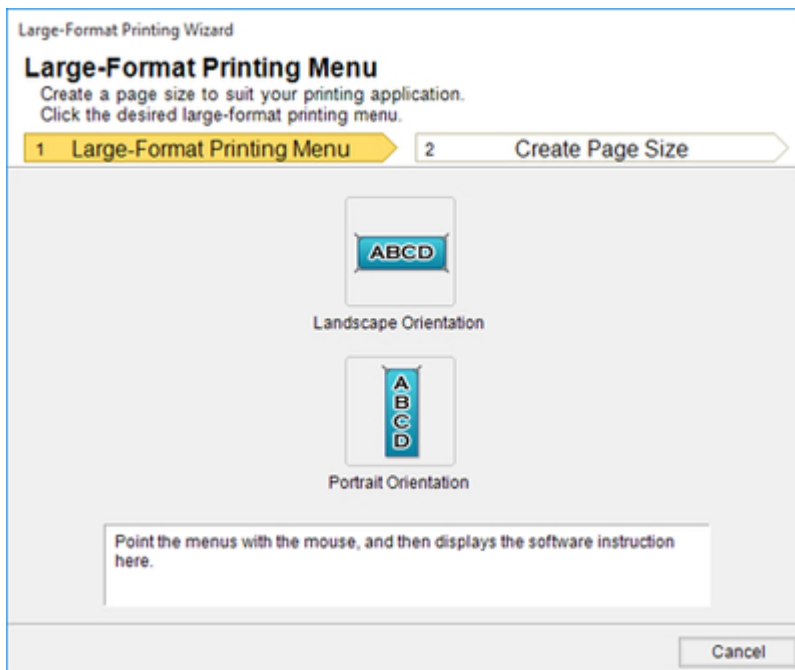
- If you open a password protected document as read-only, the **Printing Wizard** cannot be run.



- **Paper Settings** (**Paper Settings** Button)

Large-Format Wizard is displayed.

Settings for Portrait or Landscape Orientation can be set.



▶▶▶ Important

- If you want to change the display to another file or application while the **Large-Format Printing Wizard** is open, close the **Large-Format Printing Wizard** dialog box. Otherwise, you may not be able to change displays or operate the toolbar/ribbon.
- The layout may collapse if you create a form using existing data. If that is the case, modify the data again.

▶▶▶ Note

- If you open a password protected document as read-only, the **Large-Format Printing Wizard** cannot be run. Remove the password protection.

Print Matching Roll Width (PowerPoint)

Prints to the edge of the roll width. You can print large exhibits and posters, and also print Portrait and Landscape orientations made in **Large-Format Printing Wizard**.

1. Start **Microsoft PowerPoint**.
2. If **Start imagePROGRAF Print Plug-In** is displayed, click it.

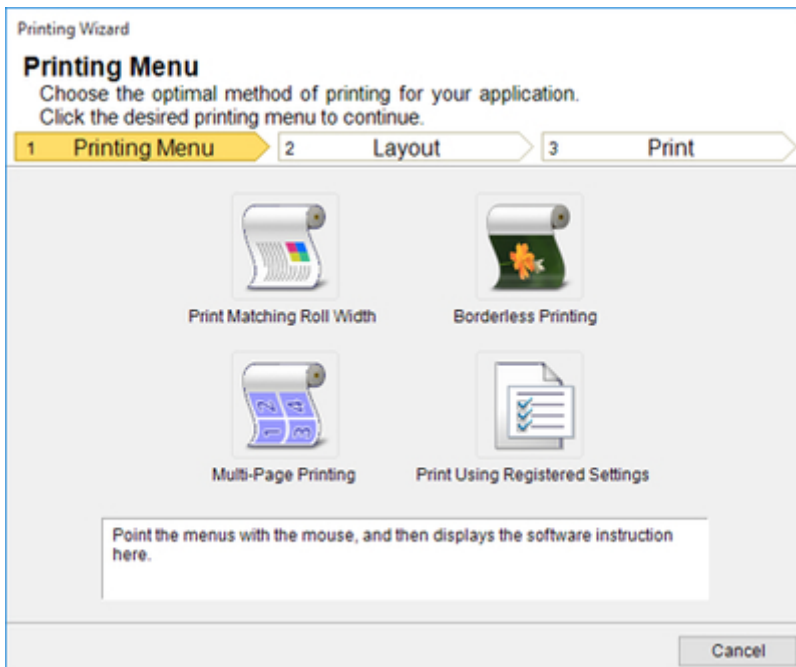


3. Click **Print** from the **imagePROGRAF Print Plug-In** toolbar/ribbon.



The **Printing Wizard** dialog box is displayed.

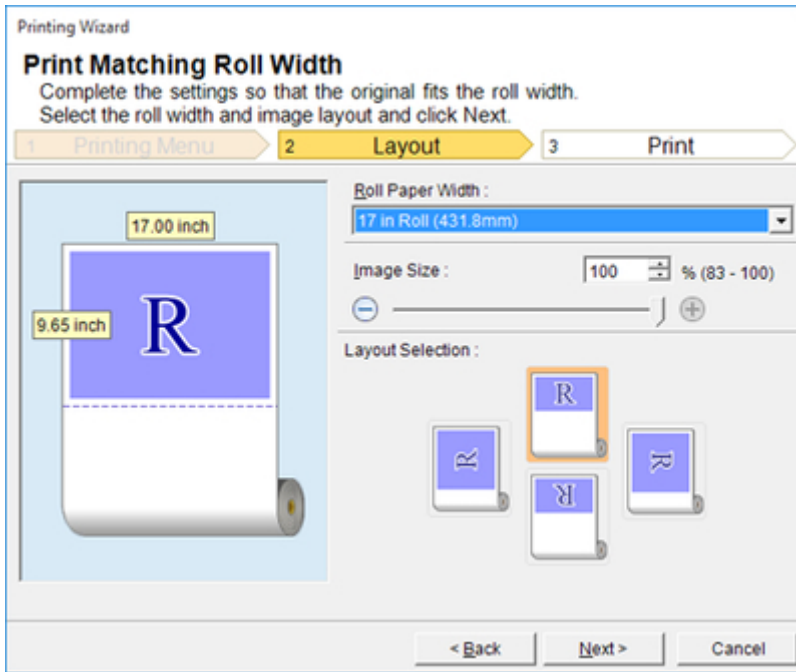
4. Click **Print Matching Roll Width**.



►►► Important

- If you want to change the display to another file or application while the **Printing Wizard** is open, close the **Printing Wizard** dialog box. Otherwise, you may not be able to change displays or operate the toolbar/ribbon.

5. Select **Roll Paper Width** that is set in the printer.

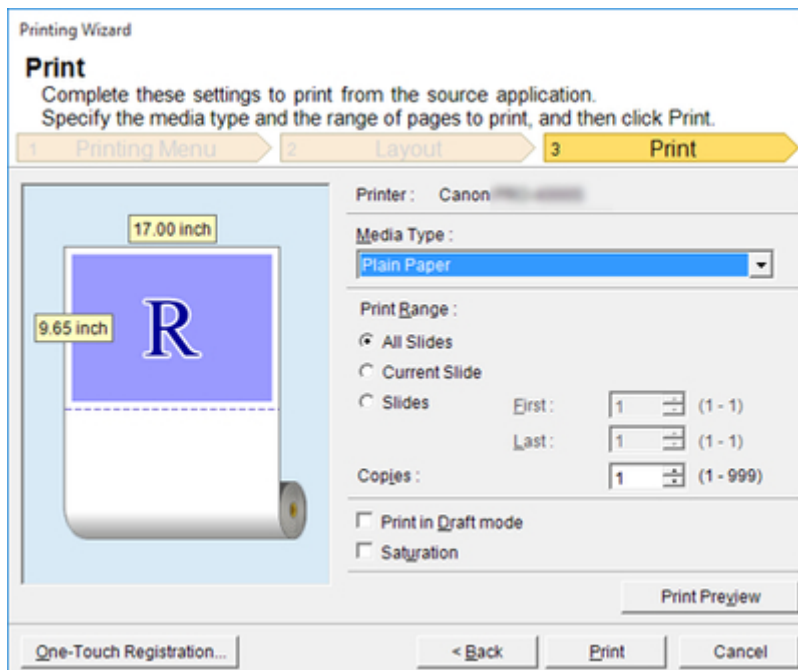


6. Select image size.

7. Select layout.

8. Click the **Next** button.

9. Select **Media Type**.



10. Select **Print Range** from **All Slides**, **Current Slide**, and **Slides**.

If **Slides** is selected, enter the slide number.

11. Enter **Copies**.

▶▶▶ Note

- When **Print in Draft mode** is selected, printing is fast but the print quality is poor.
- When **Saturation** is selected, you can print posters, etc., vividly.
- The settings are registered when the **One-Touch Registration** is pressed. This is convenient if you need to print multiple times using the same setting.
- Press the **Print Preview** button to display the preview screen. You can check and make changes to the layout in the preview screen.
- When you print to the edge of the roll width, the maximum length will be the lesser of 14.22 times the roll paper width, or 708.7 inches (18.0 m).

12. Click **Print** button.

Printing begins.

Borderless Printing (PowerPoint)

Prints up to the border of the media. Photos and posters can be printed without worrying about margins.

1. Start **Microsoft PowerPoint**.
2. If **Start imagePROGRAF Print Plug-In** is displayed, click it.

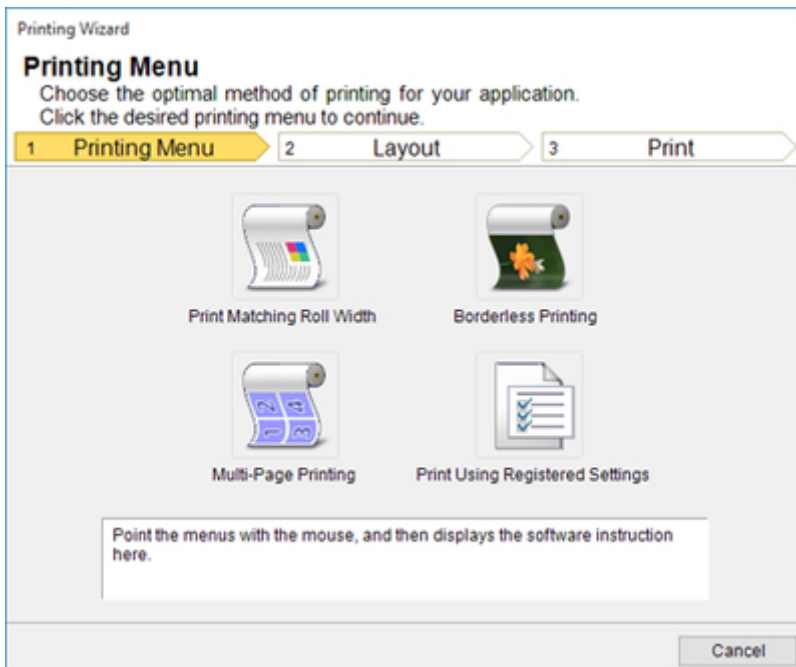


3. Click **Print** from the **imagePROGRAF Print Plug-In** toolbar/ribbon.



The **Printing Wizard** dialog box is displayed.

4. Click **Borderless Printing**.

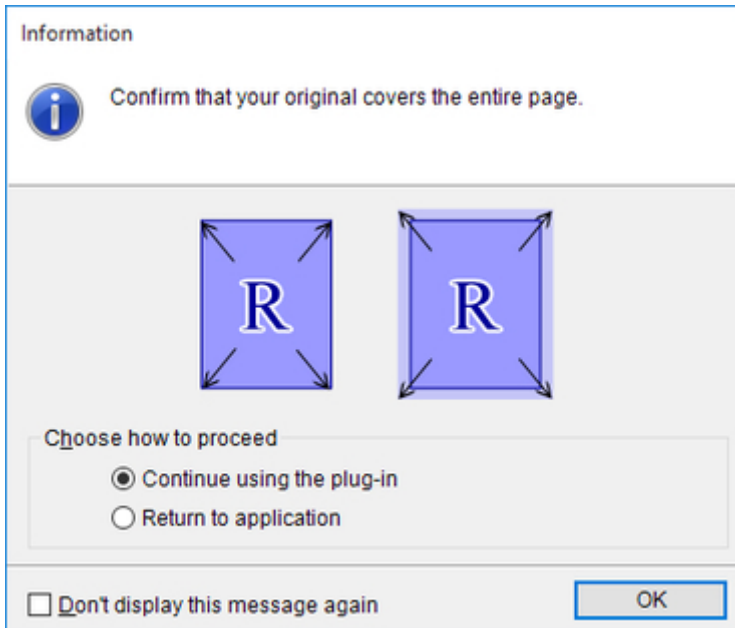


Important

- If you want to change the display to another file or application while the **Printing Wizard** is open, close the **Printing Wizard** dialog box. Otherwise, you may not be able to change displays or operate the toolbar/ribbon.

A confirmation dialog box is displayed.

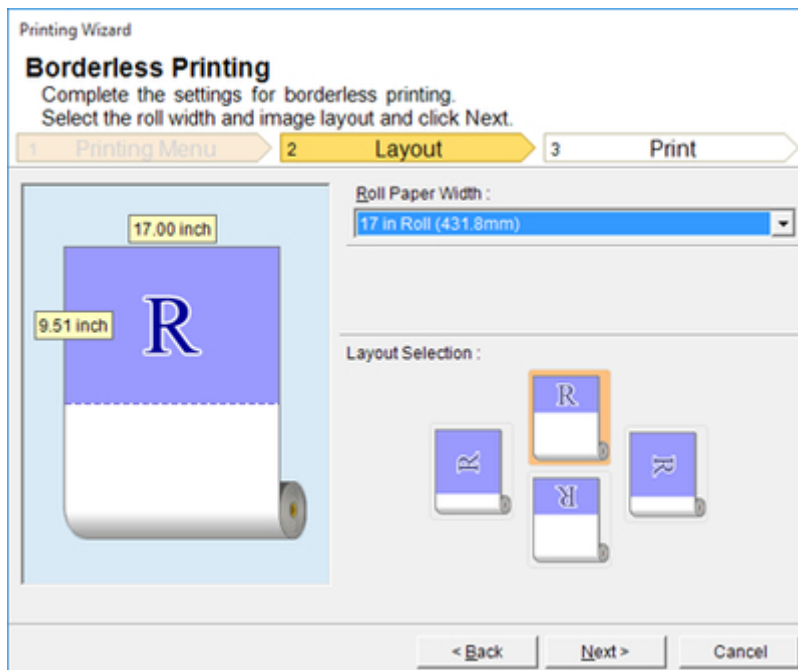
5. If the data fills up the page, confirm that **Continue using the plug-in** is selected in **Choose how to proceed** and click **OK** button.



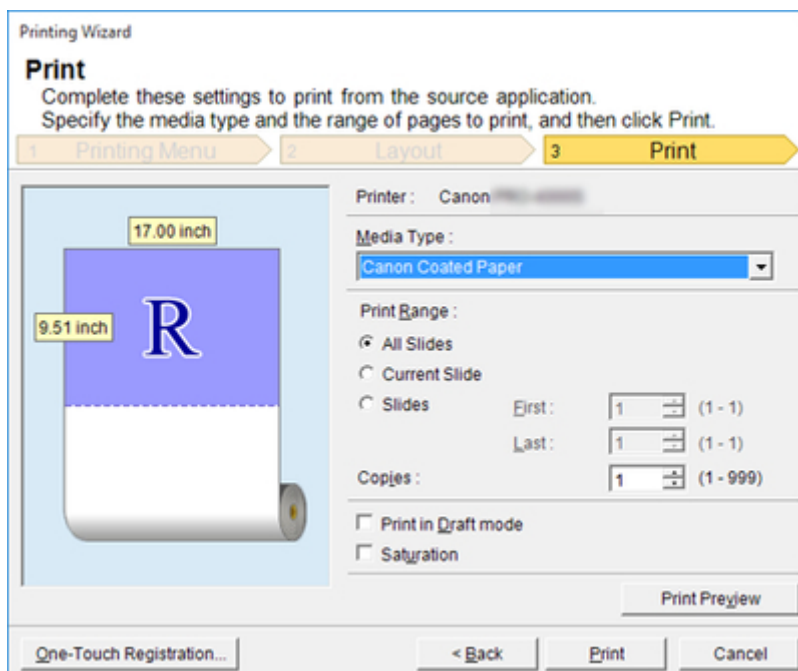
Note

- To adjust the data, select **Return to application**, and then click **OK** button. **Print Plug-In for Office** closes, and you return to the application.

6. Select **Roll Paper Width** that is set in the printer.



7. Select layout.
8. Click the **Next** button.
9. Select **Media Type**.



10. Select **Print Range** from **All Slides**, **Current Slide**, and **Slides**.
If **Slides** is selected, enter the slide number.
11. Enter **Copies**.

▶▶▶ Note

- When **Print in Draft mode** is selected, printing is fast but the print quality is poor.
- When **Saturation** is selected, you can print posters, etc., vividly.
- The settings are registered when the **One-Touch Registration** is pressed. This is convenient if you need to print multiple times using the same setting.
- Press the **Print Preview** button to display the preview screen. You can check and make changes to the layout in the preview screen.
- The maximum length for Borderless Printing is the lesser of 14.22 times the roll paper width, or 708.7 inches (18.0 m).

12. Click **Print** button.

Printing begins.

Multi-Page Printing (PowerPoint)

Prints multiple pages as one page. You can print handouts into a single page, or print matter with many pages.

1. Start **Microsoft PowerPoint**.
2. If **Start imagePROGRAF Print Plug-In** is displayed, click it.

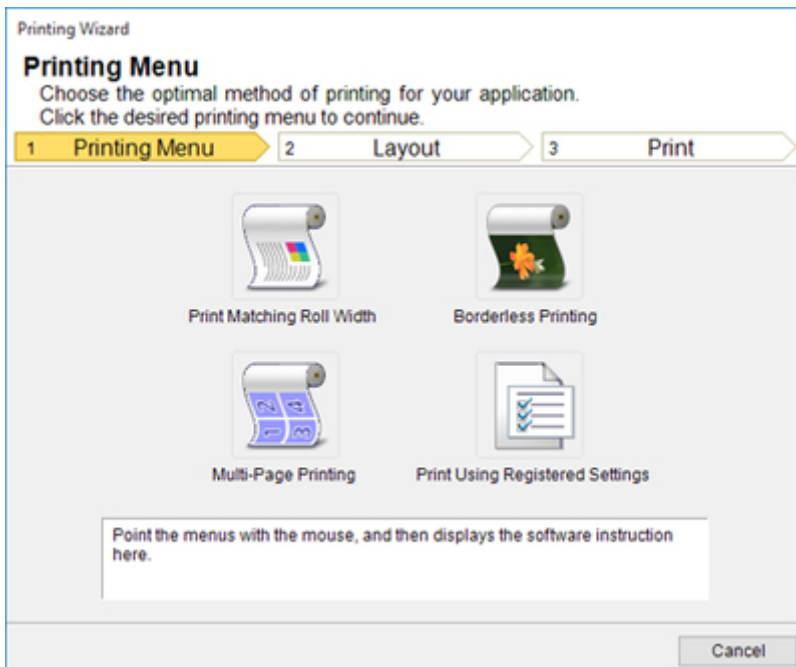


3. Click **Print** from the **imagePROGRAF Print Plug-In** toolbar/ribbon.



The **Printing Wizard** dialog box is displayed.

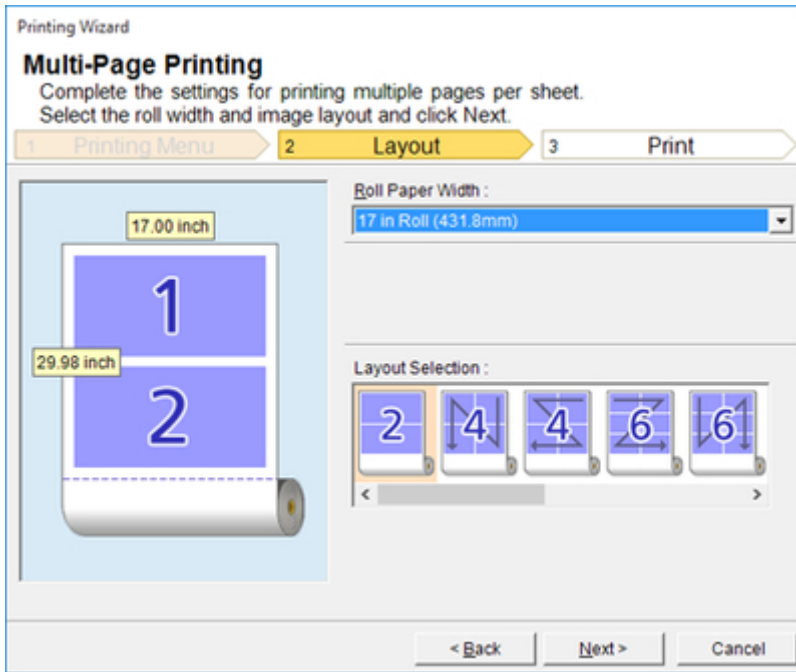
4. Click **Multi-Page Printing**.



►►► Important

- If you want to change the display to another file or application while the **Printing Wizard** is open, close the **Printing Wizard** dialog box. Otherwise, you may not be able to change displays or operate the toolbar/ribbon.

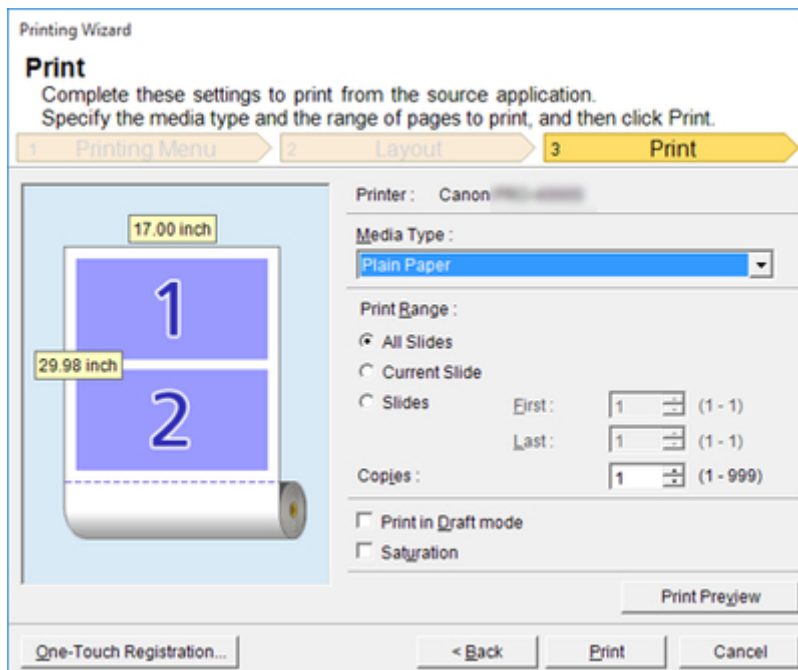
5. Select **Roll Paper Width** that is set in the printer.



6. Select layout from **Layout Selection**.

7. Click the **Next** button.

8. Select **Media Type**.



9. Select **Print Range** from **All Slides**, **Current Slide**, and **Slides**.

If **Slides** is selected, enter the slide number.

10. Enter **Copies**.

▶▶▶ Note

- When **Print in Draft mode** is selected, printing is fast but the print quality is poor.
- When **Saturation** is selected, you can print posters, etc., vividly.
- The settings are registered when the **One-Touch Registration** is pressed. This is convenient if you need to print multiple times using the same setting.
- Press the **Print Preview** button to display the preview screen. You can check and make changes to the layout in the preview screen.
- The maximum length for Multi-Page Printing is the lesser of 14.22 times the roll paper width, or 708.7 inches (18.0 m).

11. Click **Print** button.

Printing begins.

Register the Settings (PowerPoint)

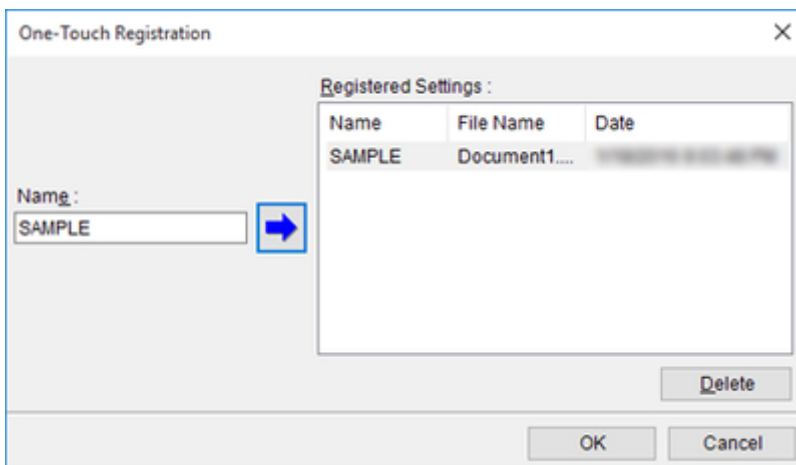
If you are going to print multiple times using the same setting, you can select **One-Touch Registration**. Registered settings can be recalled from **Print Using Registered Settings**.

1. Set up to the **Print** screen from **Print Matching Roll Width**, **Borderless Printing** or **Multi-Page Printing** of **Printing Menu**.

▶▶▶Note

- Up to 20 items can be registered.
- The available settings are as follows.
 - [Print Matching Roll Width \(PowerPoint\)](#)
 - [Borderless Printing \(PowerPoint\)](#)
 - [Multi-Page Printing \(PowerPoint\)](#)

2. Click the **One-Touch Registration** button.
3. Enter name in **Name**.



Up to 31 characters can be entered.

4. Click .

The name you entered is displayed in **Registered Settings**.

5. Click **OK**, and return to the **Print** screen.
6. Click **Print** to print, and click **Cancel** to cancel the print.

▶▶▶ Note

- Clicking **Cancel** in the **Print** screen will not delete the registered settings.

Print Using Registered Settings (PowerPoint)

Prints using the registered settings.

1. Start **Microsoft PowerPoint**.
2. If **Start imagePROGRAF Print Plug-In** is displayed, click it.

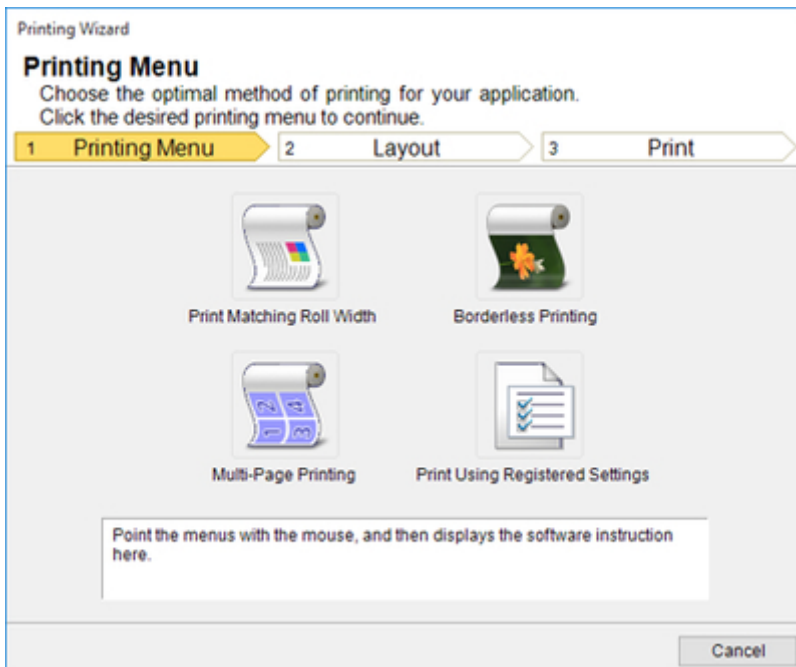


3. Click **Print** from the **imagePROGRAF Print Plug-In** toolbar/ribbon.



The **Printing Wizard** dialog box is displayed.

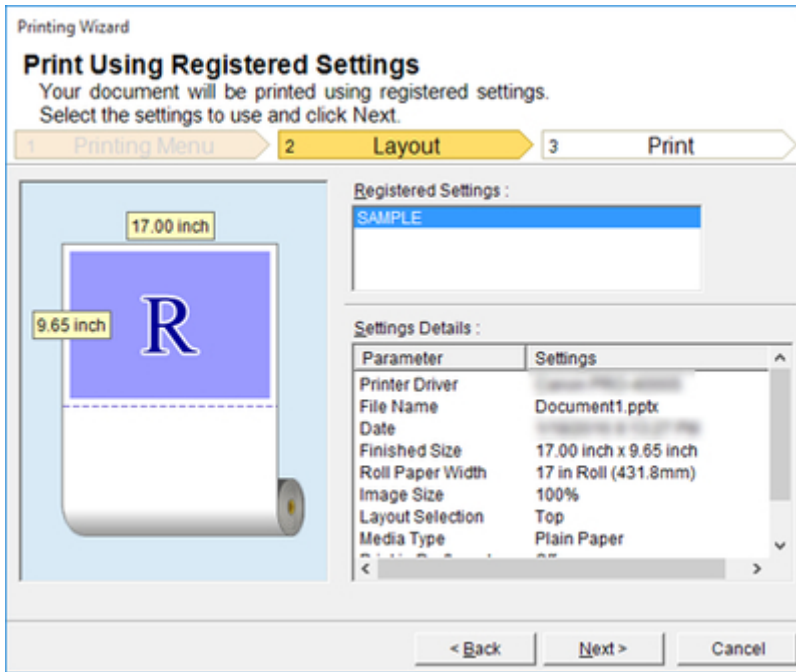
4. Click **Print Using Registered Settings**.



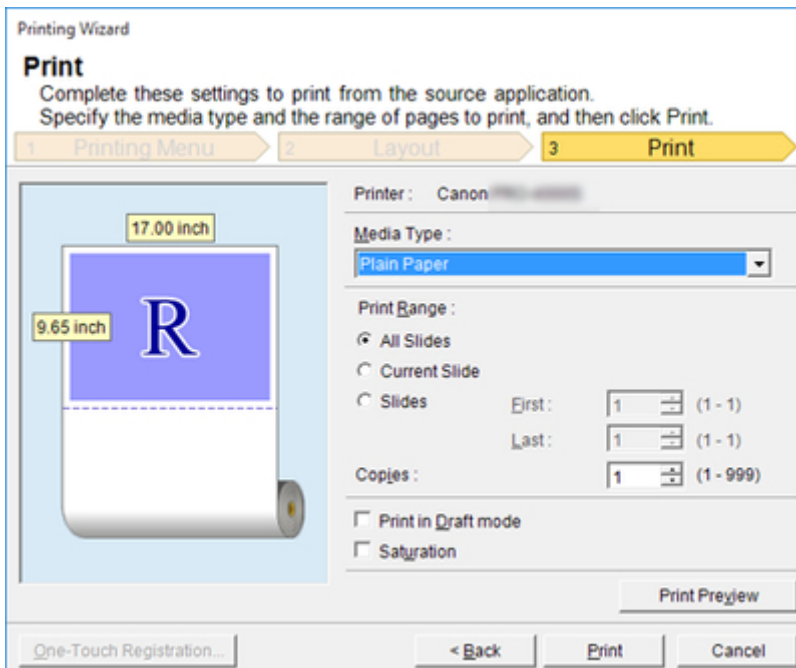
►►► Important

- If you want to change the display to another file or application while the **Printing Wizard** is open, close the **Printing Wizard** dialog box. Otherwise, you may not be able to change displays or operate the toolbar/ribbon.

5. Click the **Next** button.



6. Select **Media Type**.



7. Select **Print Range** from **All Slides**, **Current Slide**, and **Slides**.

If **Slides** is selected, enter the slide number.

8. Enter **Copies**.

▶▶▶Note

- When **Print in Draft mode** is selected, printing is fast but the print quality is poor.
- When **Saturation** is selected, you can print posters, etc., vividly.
- Press the **Print Preview** button to display the preview screen. You can check and make changes to the layout in the preview screen.
- The maximum print length when printing with the registered settings is the lesser of 14.22 times the roll paper width, or 708.7 inches (18.0 m).

9. Click **Print** button.

Printing begins.

Portrait Orientation/Landscape Orientation (PowerPoint)

Print to the edge of the roll width. You can print large exhibits and posters, or print the Landscape or Portrait Orientation Page Sizes made in the **Large-Format Printing Wizard**.

Create Page Size in Portrait or Landscape Orientation.

Use the **Large-Format Printing Wizard** to create portrait page sizes for Potrait Orientation, and landscape page sizes for Landscape Orientation.

1. Start **Microsoft PowerPoint**.
2. If **Start imagePROGRAF Print Plug-In** is displayed, click it.

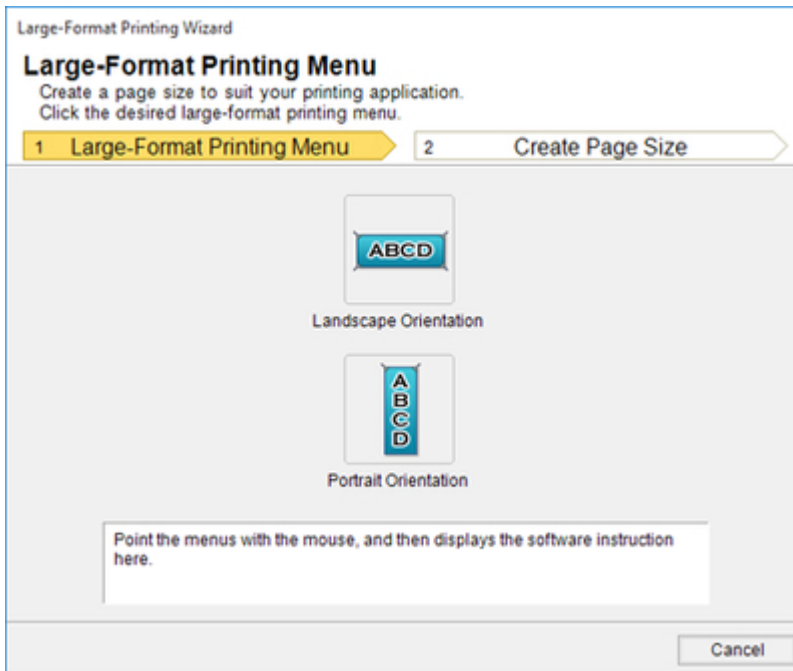


3. Click **Paper Settings** from the **imagePROGRAF Print Plug-In** toolbar/ribbon.



The **Large-Format Printing Wizard** dialog box is displayed.

4. Click **Portrait Orientation** or **Landscape Orientation**.



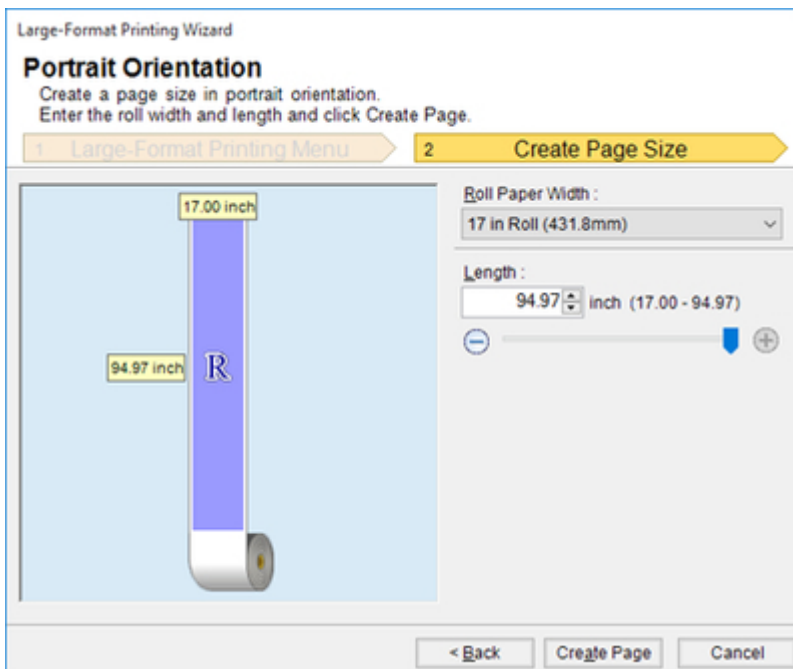
Important

- If you want to change the display to another file or application while the **Large-Format Printing Wizard** is open, close the **Large-Format Printing Wizard** dialog box. Otherwise, you may not be able to change displays or operate the toolbar/ribbon.

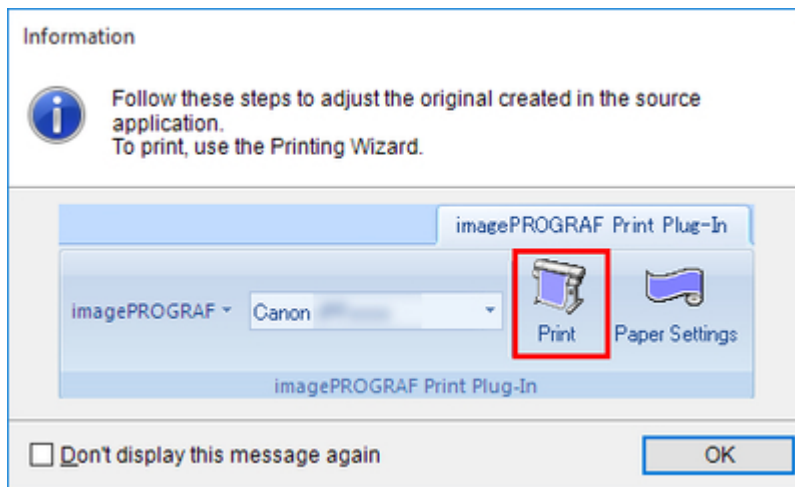
Note

- The steps taken to create a Portrait Page Size will be used as an example to explain the procedure.

5. Adjust **Length** from the list-box or slide-bar.



6. Click the **Create Page** button.
7. Click **OK** if the message is displayed.



8. Edit and create the document.

▶▶▶ Important

- The layout may collapse if you create a form using existing data. If that is the case, modify the data again.

▶▶▶ Note

- Printing is done in **Print Matching Roll Width** of the **Printing Wizard**. For details on **Print Matching Roll Width**, see "[Print Matching Roll Width \(PowerPoint\)](#)."

To Start from Microsoft Excel

Below are the steps to start **Print Plug-In for Office** from **Microsoft Excel**.

1. Start **Microsoft Excel**.
2. If **Start imagePROGRAF Print Plug-In** is displayed on the toolbar/ribbon, click it.



Important

- If the **imagePROGRAF Print Plug-In** toolbar/ribbon is not displayed, refer to the following.
 - ["When Print Plug-In for Office is Not Displayed"](#)

3. Check that the **imagePROGRAF Print Plug-In** toolbar/ribbon is displayed.



4. Click the buttons on the toolbar/ribbon according to the items you want to set.

- **imagePROGRAF** (Menu)

Displays the **About**, **Help**, and **Special Settings** dialog boxes.

You can change the settings using the **Special Settings** dialog box.

Refer to "[Configuring Special Settings](#)" for details.

- **Canon** (Printer list)

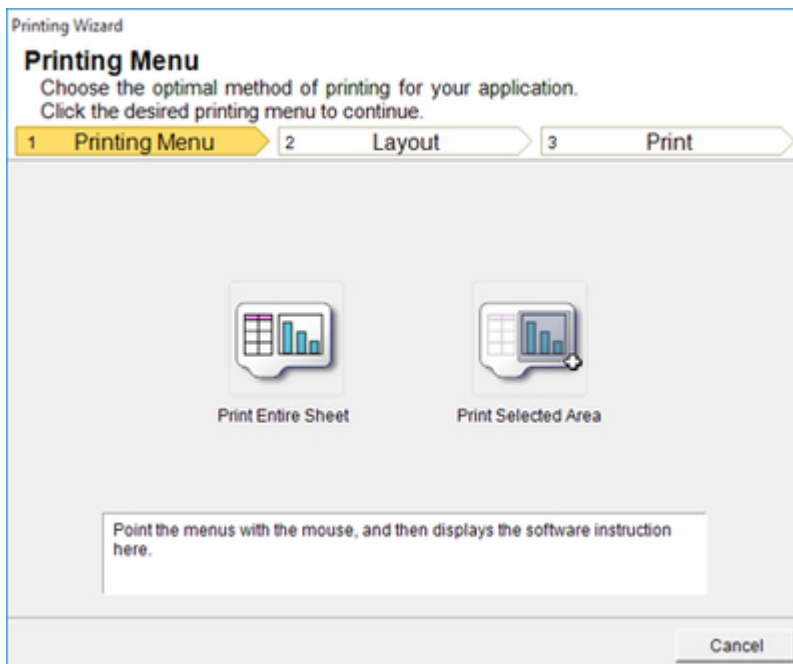
Select Printer.

If you select **Show All Printers**, the printers will appear again. Select this when you want to display all printers or update the display.



- **Print** (**Print** Button)

The print Wizard is displayed.



The settings **Print Entire Sheet** and **Print Selected Area** can be set.

▶▶▶ Important

- If you want to change the display to another file or application while the **Printing Wizard** is open, close the **Printing Wizard** dialog box. Otherwise, you may not be able to change displays or operate the toolbar/ribbon.
- The **Printing Wizard** will not start if you click the **Print** button on the toolbar/ribbon while editing a cell.
- When more than one worksheet is selected, the **Printing Wizard** cannot be run. Select only one worksheet and click **Print** again.
- When an object is selected, the **Printing Wizard** is not started if you click the **Print** button on the toolbar/ribbon.
- If the paper size in Excel is blank, the **Printing Wizard** cannot be run. From the **File** menu in Excel, select **Page Setup** and check **Paper size**.

▶▶▶ Note

- If you click the **Print** button with a graph selected, a message dialog box will appear asking if you want to continue printing. If you click **No**, you will return to the application.
- If you click the **Print** button with a page break set, a message dialog box will appear asking if you want to continue printing. If you click **No**, you will return to the application. If you do not use the set page break, check the page break preview and change the setting.
- If you click the **Print** button with a page range set, a message dialog box will appear asking if you want to continue printing. If you click **No**, you will return to the application. If you do not use the set page range, check the page break preview and change the setting.
- If you click the **Print** button with a worksheet or cell protected, a message dialog box will appear asking if you want to continue printing. If you click **No**, you will return to the application. If you want to change the setting, remove the protection from the worksheet or cell.

Print Entire Sheet (Excel)

For resizing the entire sheet to fit the roll width. Choose this option to enlarge the currently displayed sheet before printing.

1. Start **Microsoft Excel**.
2. If **Start imagePROGRAF Print Plug-In** is displayed, click it.



3. Click **Print** from the **imagePROGRAF Print Plug-In** toolbar/ribbon.



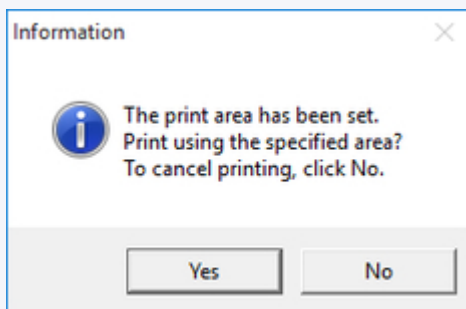
►►► Important

- When more than one worksheet is selected, the **Printing Wizard** cannot be run. Select only one worksheet and click **Print** again.

►►► Note

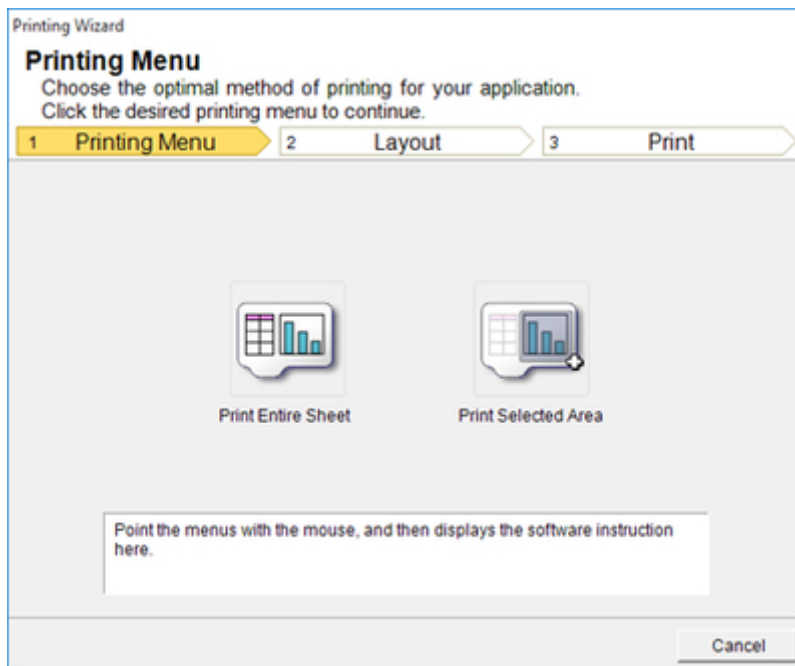
- If a print area is set, a confirmation message dialog box will appear.

To print the entire sheet, cancel the setting of the print area.

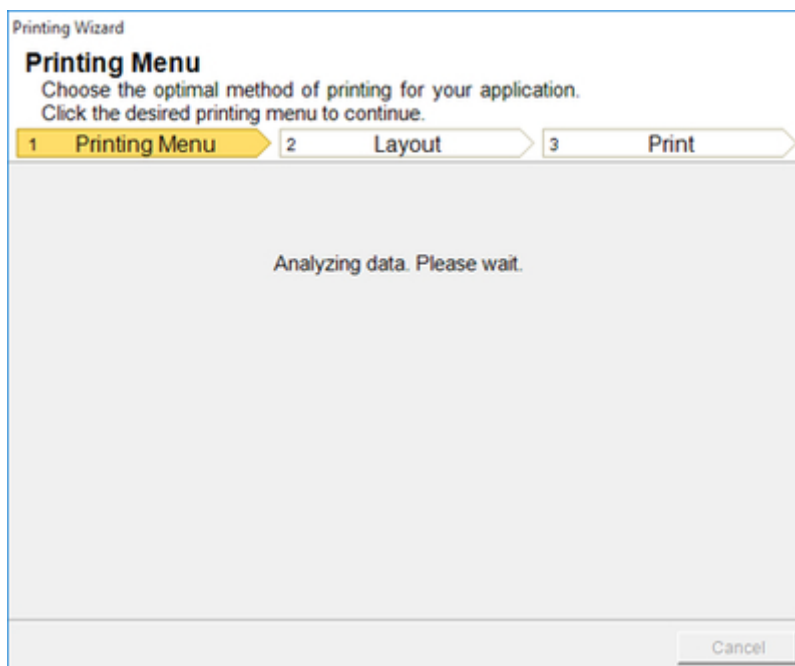


The **Printing Wizard** dialog box is displayed.

4. Click **Print Entire Sheet**.



A message will appear informing you that analysis is in progress.

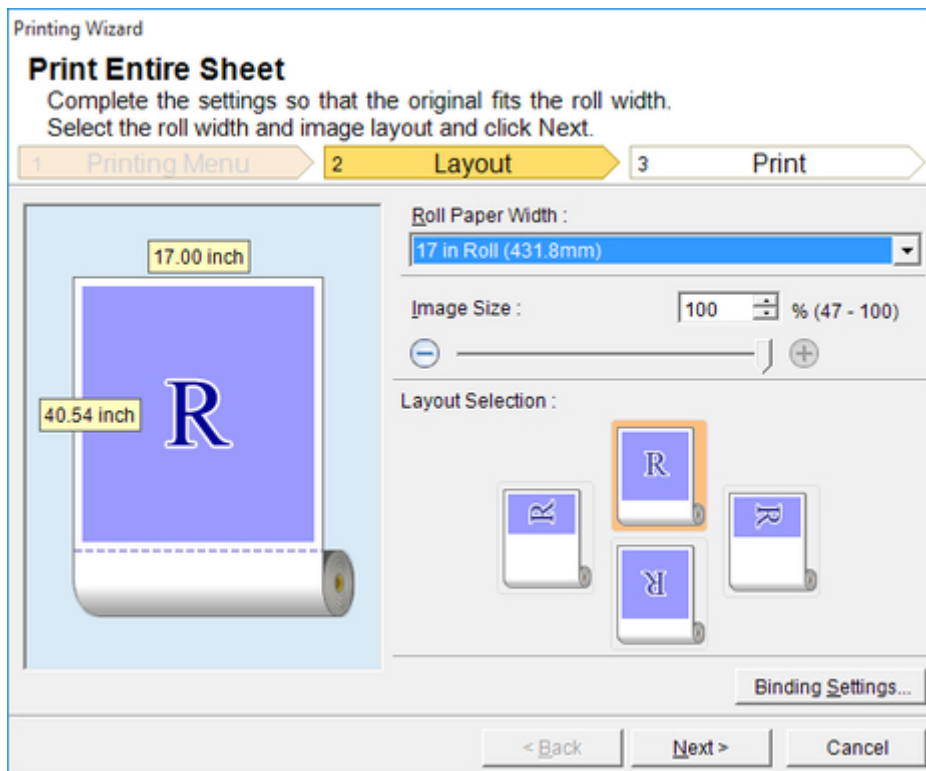


The Layout menu will appear automatically.

►►► Note

- If data analysis requires time, a message dialog will appear. If you select **No**, you will return to the application.

5. Select **Roll Paper Width** that is set in the printer.



6. Select image size.

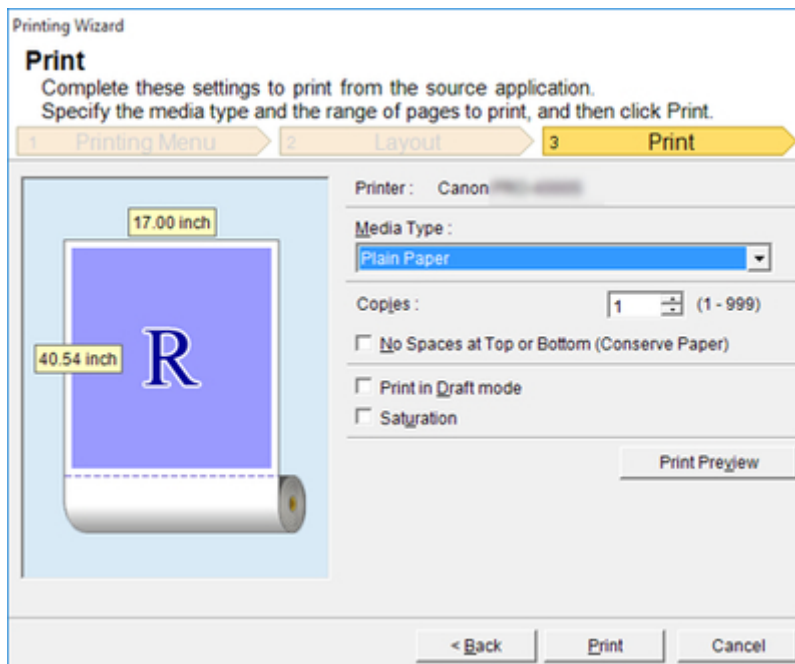
7. Select layout.

8. To configure **Binding**, click the **Binding Settings** button.

Refer to "[Configuring Binding \(Excel\)](#)" for details on the procedure for configuring **Binding**.

9. Click the **Next** button.

10. Select **Media Type**.



11. Enter **Copies**.

12. If the upper and lower margins are too wide, check **No Spaces at Top or Bottom (Conserve Paper)**.

The upper and lower margins can be checked in **Print Preview**.

▶▶▶Note

- When **Print in Draft mode** is selected, printing is fast but the print quality is poor.
- When **Saturation** is selected, you can print posters, etc., vividly.
- Press the **Print Preview** button to display the preview screen. You can check and make changes to the layout in the preview screen.
- When you print to the edge of the roll width, the maximum print length is 708.7 inches (18.0 m).

13. Click **Print** button.

Printing begins.

▶▶▶Important

- If divided into plural pages, try reducing the data size or the range you select.
- You cannot run **Print** or **Print Preview** if you select it for a worksheet with no data displayed.

Print Selected Area (Excel)

For resizing the selected range of cells to fit the roll width. Choose this option to enlarge a particular part of the sheet before printing.

1. Start **Microsoft Excel**.
2. If **Start imagePROGRAF Print Plug-In** is displayed, click it.



3. Click **Print** from the **imagePROGRAF Print Plug-In** toolbar/ribbon.



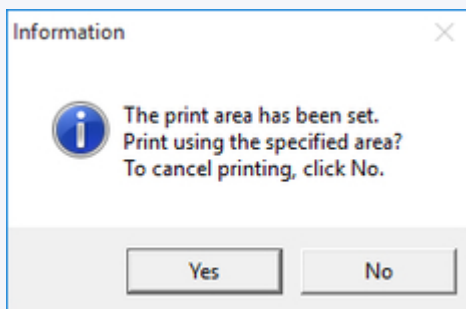
►►► Important

- When more than one worksheet is selected, the **Printing Wizard** cannot be run. Select only one worksheet and click **Print** again.

►►► Note

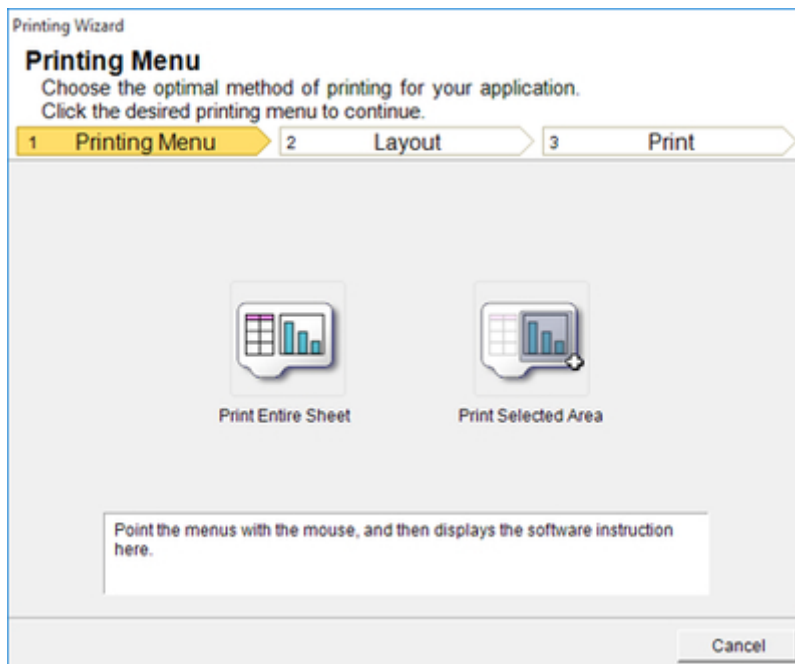
- If a print area is set, a confirmation message dialog box will appear.

To print the selected area, cancel the setting of the print area.



The **Printing Wizard** dialog box is displayed.

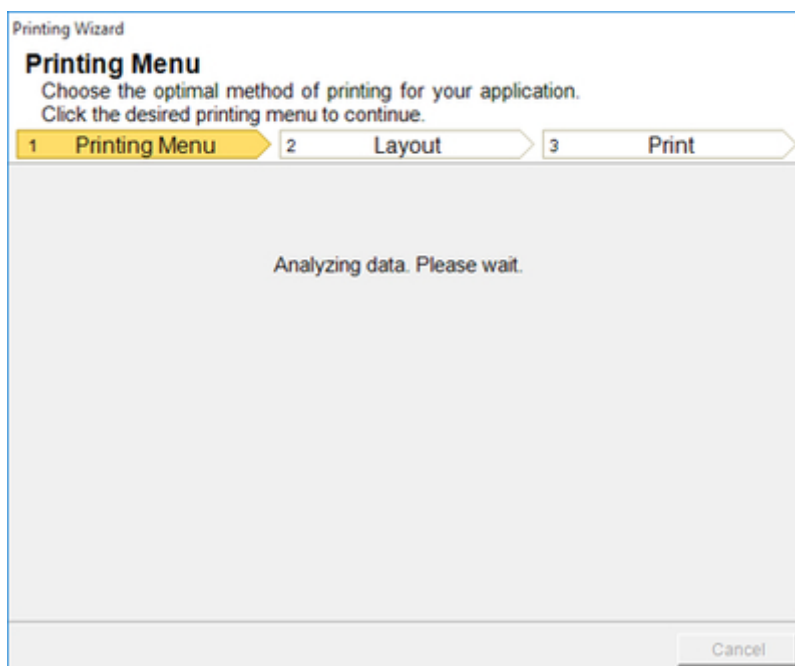
4. Click **Print Selected Area**.



►►► Important

- If only one cell is selected, **Print Selected Area** cannot be selected.

A message will appear informing you that analysis is in progress.



The Layout menu will appear automatically.

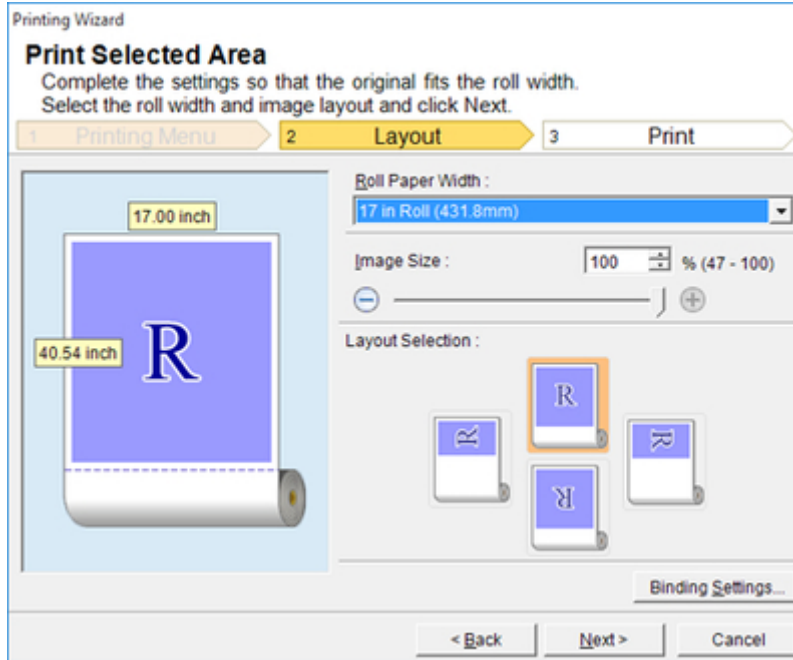
►►► Important

- If the range selected is too large, it will not be possible to analyze the data. Select a smaller range and then run the analysis.

►►► Note

- If data analysis requires time, a message dialog will appear. If you select **No**, you will return to the application.

5. Select **Roll Paper Width** that is set in the printer.



6. Select image size.

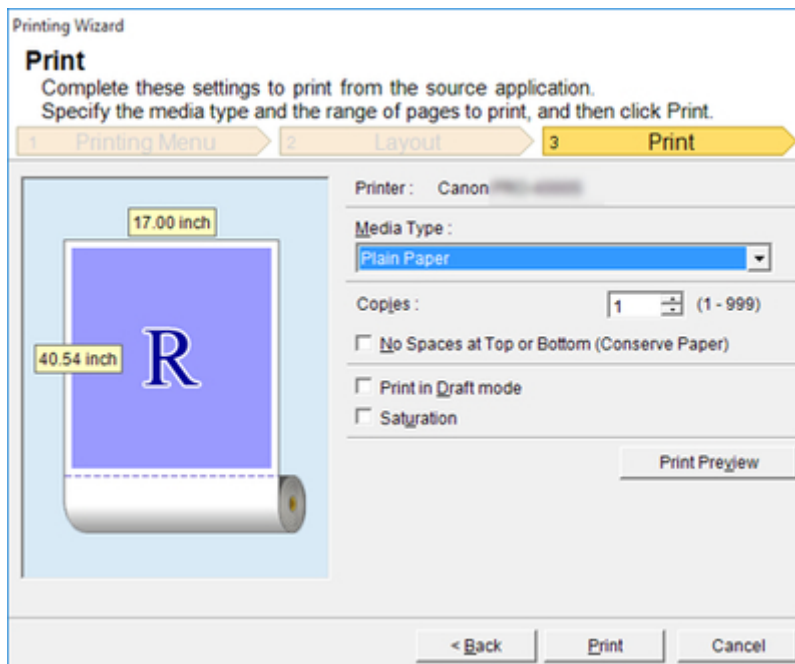
7. Select layout.

8. To configure **Binding**, click the **Binding Settings** button.

Refer to "[Configuring Binding \(Excel\)](#)" for details on the procedure for configuring **Binding**.

9. Click the **Next** button.

10. Select **Media Type**.



11. Enter **Copies**.

12. If the upper and lower margins are too wide, check **No Spaces at Top or Bottom (Conserve Paper)**.

The upper and lower margins can be checked in **Print Preview**.

▶▶▶Note

- When **Print in Draft mode** is selected, printing is fast but the print quality is poor.
- When **Saturation** is selected, you can print posters, etc., vividly.
- Press the **Print Preview** button to display the preview screen. You can check and make changes to the layout in the preview screen.
- When you print to the edge of the roll width, the maximum print length is 708.7 inches (18.0 m).

13. Click **Print** button.

Printing begins.

▶▶▶Important

- If divided into plural pages, try reducing the data size or the range you select.
- You cannot run **Print** or **Print Preview** if you select it for a worksheet with no data displayed.

Configuring Binding (Excel)

You can configure **Binding** margins for binding printouts.

1. Configure the settings up to **Layout Selection** in the **Layout** screen in **Print Entire Sheet** or **Print Selected Area**.

Refer to "[Print Entire Sheet \(Excel\)](#)" and "[Print Selected Area \(Excel\)](#)" for the configuration methods.

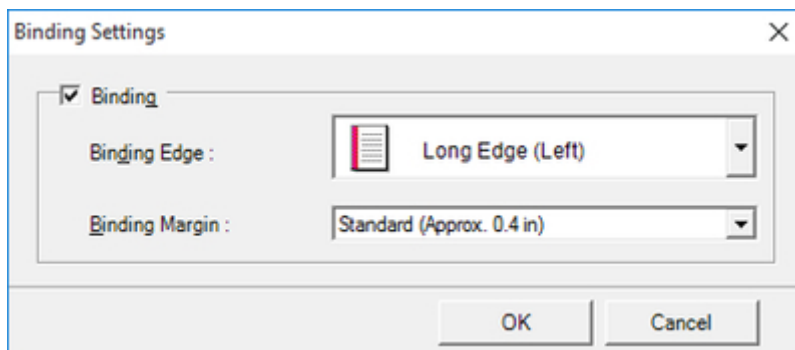
2. Click the **Binding Settings** button.

▶▶▶ Important

- You cannot click the **Binding Settings** button in the following situations.
 - When the **Image Size** is set to a value smaller than **100%**
 - When a graph is selected
 - When page breaks have been set
 - When a sheet or cell is protected

Open the **Binding Settings** dialog box.

3. If the **Binding** checkbox is not checked, select it to turn binding on.



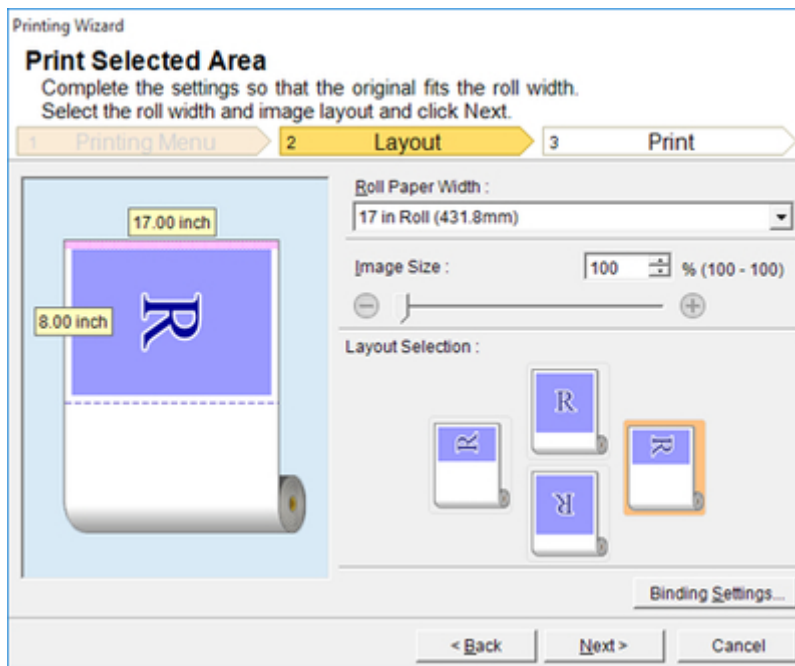
4. Select **Binding Edge**.

5. Select **Binding Margin**.

6. Click the **OK** button.

Return to the **Layout** screen.

7. Check that the **Binding** settings are applied in the preview screen.

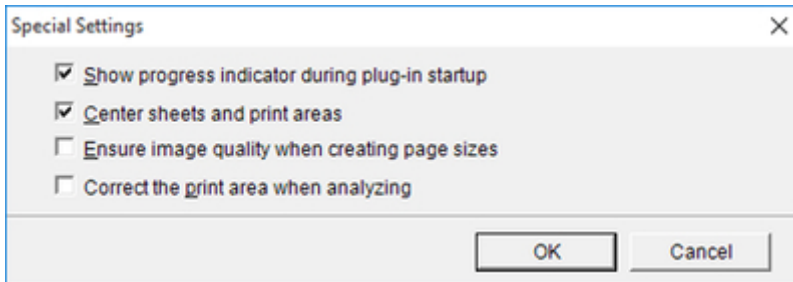


8. Configure the settings in the **Printing Wizard** dialog box.

Configuring Special Settings

You can configure **Special Settings** from the **imagePROGRAF Print Plug-In** toolbar.

1. Click **imagePROGRAF** in the toolbar, and select **Special Settings**.
2. Turn the checkbox for the item you want to change on or off.



Show progress indicator during plug-in startup

When this setting is off, hides the progress indicator that appears while the plug-in is starting up.

Center sheets and print areas

When this setting is off, printing is performed without changing the position. When this setting is on, printing is performed with the top, bottom, left, and right margins layed out equally. When this setting is off, printing is performed without changing the position.

This function is only valid in **Microsoft Excel**.

Ensure image quality when creating page sizes

When this setting is on, documents are created at the maximum size. This reduces the enlargement ratio during actual printing, which minimizes degradation of the quality of photos, etc.

This function is only valid in **Microsoft PowerPoint**.

Correct the print area when analyzing

For data that cannot be processed with usual data analysis, the print area is corrected and then the data is processed. When data analysis fails, you may be able to print by turning on this checkbox.

This function is only valid in **Microsoft Excel**.

3. Click **OK** to close the **Special Settings** dialog box.